

# Robertson Newsletter

August 2000

Edition 19

## Governor of NSW at Burrawang.

A most exciting and innovative Arts and Crafts Exhibition is scheduled to be held at the Burrawang School of Arts from Friday September 1st to Sunday September 3rd.

An Official Function (tickets \$10) is planned for 3pm on Saturday September 2nd. The Guest of Honour will be The Governor of New South Wales, The Honourable Gordon Samuels A.C. and Mrs. Samuels. Naturally, we look forward to welcoming them both to this spectacular corner of our State.

Public entry to the Exhibition at all other times will be free of charge. The organisers will retain 20% of all sales proceeds and this money will be divided equally between The Childrens' Cancer Institute of Australia for Medical Research and the Committee of the Burrawang School of Arts.

This will be the first Exhibition of its kind to be organised by the Committee and every effort is being made to ensure that it will be a most successful event and one, moreover which will be generously supported by all in our community.

## ARE YOU AN ARTIST OR A CRAFTSPERSON ?

If so, you might wish to consider taking part in the Exhibition. Your work may also be sold at the exhibition which has already attracted lots of attention.

The Organisers are also looking for Volunteers to help in the running of the exhibition and if you feel you can spare a few hours all or any of those days please call either of the numbers below.

For further information please contact Mrs. Harley Martin (4886 4406) or Mrs. Theresa Baudert (4886 4428).

## TREE PLANTING FOR FEDERATION CENTENARY

Wouldn't it be lovely to see all the gardens in the main street of Robertson and the approaches to the village a blaze of colour in autumn?

This is now possible with a grant of \$800 from the Federal Government and the Wingecarribee Council. An official tree-planting programme is being planned to celebrate the Centenary of Federation, but residents and organisations can also join in by applying for free trees. As well, the number of trees can be augmented if any person or organization would like to contribute \$5 per tree.

Although we have our beautiful avenue of cherry trees, we do not have the glorious green of spring and summer, and splendid autumn foliage of Moss Vale or Bowral in many of our main street gardens and entrances to Robertson. So now is our chance. Let's take advantage of this Federation Centenary grant and PLANT A TREE.

For more information, phone Joan Compagnoni, on 48851280.

## The Cheese Shop at the Old Cheese Factory

We have the most extensive range of Australian Cheese in the Southern Highlands - from local Brie & Camembert to Gippsland Blue & Western Australian Cheddar.

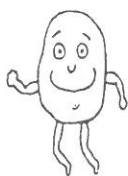


Call in for a free  
tasting.



## Robertson Potatoes

Freshly Dug  
Locally Grown



Available 7 days  
R. J. Mackey  
Real Estate

Tony Fisk

Phone 02 4885 1329

Present this ad for a 10% discount - August 2000 only.

## BRIAN T G MUIR BA. Dip Ed. Dip Law

An experienced lawyer in general practice.  
All enquiries welcome.

Brian Muir & Company  
Lawyers

36 Hoddle Street  
Robertson NSW 2577

Tel:(02) 4885 1644

Email: muirbsol@ozemail.com.au.

# CONNIE'S CUTS

Now available for Shampoo & Blowwaves.  
Also stocking "Lice Busters" - an all-natural  
lice treatment and repellant.

Phone - 4885 2383

## Biodiversity Specialist to visit Robertson

At the August meeting of the Robertson Environment Protection Society, Dr Judy West will speak on Biodiversity in Australia. Dr West is Director of the Centre for Plant Biodiversity Research at the CSIRO Plant Industry laboratories in Canberra. She has an active involvement with national and international organisations concerned with biodiversity issues, as well as a professional interest in taxonomy.

Dr West will discuss the problems inherent in Australia's piecemeal approach to conservation and examine how we are not only losing species, but whole ecological communities, at an alarming rate. She has stated that

"We have around 7% of the world's species and between 60% and 90% of our species are found nowhere else in the world. The only way we can protect these species is to invest in the knowledge which will allow us to manage the environment effectively on an ecosystem level - and that is truly an investment in Australia's future."

Please join us at this significant meeting to hear one of the leading figures in plant science tell us about the importance of biodiversity - the real "variety of life" - in ensuring effective, ecologically-sustainable agriculture for our future.

The meeting will commence at 7.30pm, in the Community Centre in Caalong St., on Friday 11th August. The hall is well heated and comfortable and all interested are welcome. Admission is free and a light supper will be served at the end of the evening.

### To Let

#### Robertson

- 4 Bedroom brick veneer, Garage, Wood fire & gas heating \$180pw
- 3 Bedroom brick veneer, Wood fire, Fenced yard - \$170pw
- 2 bedroom cottage, Furnished, Wood fire, gas heating - \$220pw

#### Burrawang

- 4 bedroom 2 storey weather-board cottage, open fire & gas heating - \$220 pw



**R J MACKEY** Real Estate  
Robertson Phone 4885 1329

## BUSINESS ASSOCIATION FIRST BIRTHDAY

"We're still finding our feet, but we've already achieved a great deal"

That was the message of Robertson Business Association President Allan Jackson at the RBA's well-attended July dinner and AGM at the Country Motel.

Highlights of the year include the publication of a 2nd edition of the Robertson Brochure, co-ordination of the Village Newsletter, the negotiation of a group discount for TV advertising, and taking up membership of the potentially very influential Southern Highlands Business Chamber. A sub committee has been formed to plan improvements to town entry signage, and the town-centre information bay.

"The Association is growing in strength and confidence. We believe we can be a powerful and effective voice for the business community. But," Allan stressed, "we can only do that with your active support. We have 20 members now, and we hope that, before long, every business in town will see it as in their interests to be part of the Association."

Allan was re-elected for a second term.

### SUBSCRIPTIONS REDUCED!

To encourage wider membership, it was agreed to reduce subscriptions for the coming year to \$65: rare good news in an era of ever increasing costs.

### MEETING SCHEDULE

General Meetings take place on the 1st Tuesday of each month at the Community Centre, at 7pm.

NEXT MEETING: TUES. 5 TH SEPTEMBER

### THE ROBERTSON BUSINESS ASSOCIATION

dedicated to making Robertson

**BETTER FOR YOUR BUSINESS**

AND

**A BETTER PLACE TO LIVE**

## Pizzas in the Mist New!

- \*BBQ Chicken Pizza\*
- \*Hickory Smoked Pork Ribs\*

4885 1799

**Dine In or Take Away**

**ODE TO THE DUMPER**  
(from the Hampden Park Management Committee)

The Hampden Park committee really thinks that it's a pity  
that some thoughtless folk among us dump their rubbish in the park.  
And it happens all too often but on this one we'll not soften  
*Do not leave your all-and-sundry there by day or after dark.*

There's the little bin for wrappers, the recycling bay as well,  
but the *proper* use of these bins is unknown we sure can tell!  
Where there is no garbage service then no garbage rate you pay,  
so this is your obligation do the *right* thing come what may.

You can hire a tip trip service for your rubbish as you need,  
but for *clean recycling only* make "recycling bay" your creed.

The bay's there for *tidy* people who card and paper stack and tie,  
and tins, glass or plastic bottles are clean and shiny, that's no lie.  
*Nothing else is left there* for they know *a tip it's not*.

And anyhow, who'd want to be known to others as a grot?  
But disgusting dumping habits done with such impunity  
are you people really part of *our* community?

You may be small in number but a great big mess you make.  
Could such actions be deliberate? We think they are, make no mistake.

But the committee's ever hopeful that one day you'll "double take"

then discard your wayward habits and responsible citizens make

So we have some information to help you with the task,

and if you have any questions then Waste Services you should ask.

Hampden Park's our prime possession for all our folk to use.

We're working hard to make improvements. Please respect it don't abuse.



## Community Notices

**THE BURRAWANG FILM CLUB** will show Kind Hearts & Coronets on Aug 4th at 7.30pm in the Burrawang Hall.  
\$5 Membership fee includes refreshment.

**THE COMPANY OF PLAYERS**, a professional co-operative of Actors, directed by Matthew O'Sullivan and including Candy Raymond, Steve Vella, Nicky Owen and Oliver Baudert will present AN AUDIENCE WITH OSCAR WILDE on Fri, 18 August at 8pm, Sat 19 August at 5pm & 8pm and on Sunday 20 August, at 3pm. The Saturday evening performance includes a "Wildean Champagne Supper".

Advance bookings are essential. Phone 4886 4428

### WINGECARRIBEE HEALTH EARLY CHILDHOOD SERVICES

We wish to advise that as of the week commencing 7th August 2000, it will be necessary to make appointments for all Clinics as there will be no "Drop in" clinics.

Appointments can be made by phoning 4861 8000, Monday to Friday 8.30am - 4.30pm.

### THE OLYMPICS ON THE BIG SCREEN.

St John's church will be making the Olympic television coverage available to the community on the big screen in the Church Hall for the duration of the Games.  
Come along for a BYO Barbeque on the opening night and watch the Opening Ceremony on the big screen.  
Drop in to the hall anytime during the Games and watch them on the big screen.

Tea and Coffee will be available but everything else is BYO. (Including seating if you want something comfortable eg. Bean chairs.)



**WARM FEET FOR WINTER**  
Keep your feet warm this winter!  
Fleecy Lambs Wool Footwarmers for only \$22.00

**The Old Cheese Factory Gift Shop**



Laurel Horton

Ph : 4885 2144

# YOUR HANDY GUIDE TO GARBAGE DISPOSAL AND RECYCLING

This information is a summary of the options available to people in the Robertson area with no garbage or recycling collection service, or if you have a Council garbage service, how to have extra waste collected. More details on Council's waste and recycling services are provided in Council brochures available at Waters General Store, local real estate agents and the post office.

## No garbage collection?

If you are not in a garbage collection area then you are obliged to dispose of your waste in a responsible manner.

- Option 1:** You can take your garbage to Welby Transfer Station open 8 am - 4 pm, 7 days (not open public holidays). Rural residents have the option of purchasing from Council a Rural Waste Card which allows 12 car or 6 trailer loads at a discounted price. All recycling can be done at Welby. Used motor oil in an oil container and used car batteries can be taken to the Welby depot. **Tablelands Bottle and Recycling % 48712575** (located at the Welby depot) will pay for all scrap metal, aluminium, car batteries and radiators, glass etc.
- Option 2:** You can hire a private waste contractor to collect your garbage on a regular or occasional basis. As private contractors currently collect only mixed waste, if you wish to separate recyclables from your garbage then you may use the Robertson recycling drop-off bay for your clean mixed household recyclables.
- Option 3:** You can use a combination of the above.

## •WASTE COLLECTION SERVICES FOR HOUSEHOLDS OR BUSINESSES

The following private waste contractors provide a collection service for mixed waste:

**Wingecarribee Waste % 48623008** Industrial and commercial waste and recycling. Household collection service available on a regular or occasional basis with a 1500 litre (1.5 cu.m) metal container provided for mixed waste. 3000 litre (3 cu.m) containers also available for cleanups.

**Highlands Tip Trips % 48771444** Household garbage service for residents not serviced by Council. Provide a 240 litre bin for mixed waste collected either weekly, fortnightly or monthly.

**Moss Vale Fast Skips % 48682473** Skips provided for building sites, cleanups etc.

**Supa Skip % 48622160** 2000 litre (2 cu.m) skips for builders, garden, household or industrial waste.

## •WASTE COLLECTION AND RECYCLING SERVICES FOR BUSINESSES

You may use the above private services. Wingecarribee Shire Council also has a commercial and industrial waste collection and recycling service weekly, fortnightly or as required. This includes:

- 1 Paper & Cardboard
- 2 Mixed Recycling
- 3 General Mixed Waste
- 4 Document Shredding

A brochure outlining these services and charges is available. For further information from WSC Waste Services % 48680710.

## More than a 55 litre bin of waste?

If a 55 litre bin is occasionally insufficient for your needs you can purchase for \$2.20 a yellow "Extra Waste" sticker for each extra 55 litre bin to be collected with the normal garbage collection. (NOTE: For occupational health and safety reasons garbage bags must be placed in a bin, so keep a spare bin.) Extra crates of recyclables will be collected at no charge. The yellow "Extra Waste" stickers are available from Waters General Store and local real estate agents.

## What is the recycling drop-off bay for?

- The recycling bay is a facility **for households that do not have a recycling collection service** and who wish to recycle.
- It is located in the village to be central to residents in the surrounding rural areas. Because of its location it is a compact facility designed to cater only for domestic amounts of recyclables so it is **not for commercial or business use**.
- Only these empty and clean mixed recyclables can be left in the containers provided:** Glass bottles and jars, all other household plastic containers (e.g. yoghurt, margarine, ice-cream), pressure pack cans, steel food cans, PET plastic containers, rocket bottoms, aluminium cans, milk and juice cartons, HDPE plastic containers (e.g. milk, juice, shampoo) SQUASH PLASTICS AND CANS TO REDUCE VOLUME; Newspaper, magazines, cardboard - ALL FLATTENED, BUNDLED AND TIED, scrap paper secured in a cardboard box STACK NEATLY IN THE COVERED PAPER CONTAINERS (so more can fit in). **No plastic bags or styrofoam boxes.**



## Letters to the Editor.

### Council Matters.

Negotiations are still continuing with Rail Estate for the Lease on the Robertson Railway Station. Council have given in principle support to the project and the Current Steering Committee is now at a stage where we are ready to make a formal presentation of our submission to Rail Estate. I am sure that this project if successful, will benefit all businesses, artists and residents within the village.

Last year I suggested to Council that it might be a good idea to conduct a number of Public Forums in the Shire so that residents could get the opportunity to meet their local Councillors and raise any issues of concern that they may have. It has been decided that Council take these forums out into the villages as well.

As a result of this a Public Forum will be held in Robertson on the 3rd of October 2000, so please mark that date on your calendar and come along.

I have been working with some of the youth of the village, particularly Sam Craig and David Tilley, in an attempt to convince Council to support the efforts of our young people to get a skating facility in Robertson. It is early days yet, however the efforts of these young people have been acknowledged and Council's Youth Voice Committee are considering this proposal. By the way, the next Youth Voice Committee of Council will be held in Robertson so that our youth can have their say.

A special meeting between Council and the RTA on the 20th of July will confirm a commencement date for works on the Illawarra Highway and Sheepwash Rd intersection.

If there are any issues, which you wish me to raise in Council on your behalf, please let me know.

Larry Whipper.

Ph: 4885 1695. Fax: 4885 1978

### Pantomime Cancellation

This is a brief letter simply to say how sorry I am that it was not possible, after all, to present the pantomime "Cinderella" which was scheduled for July production at the Burrawang School of Arts.

The cancellation was due to circumstances beyond my control and I take this opportunity to extend my grateful thanks to Melanie Tait and to other cast members who devoted so much enthusiastic effort to weeks of preparation. Nobody could have tried harder.

Arthur Jackson.

## Some GOOD GST News!

Robertson Recollections has absorbed the cost of GST on all existing stock.

The prices on our thousands of items of fine china, collectables, books and furniture are UNCHANGED.

There may be some adjustment for GST as new stock is introduced. But our aim is to restrict these rises to never more than 5%. We hope this will help you to keep enjoying your treasure hunting at...

**Robertson Recollections**  
**26 Hoddle St. Every day except Wednesday.**

## UNDER NEW MANAGEMENT



The Robertson Butchery has recently changed hands seeing Nathan moving onto greener pastures. We would all like to wish Nathan all the very best in his new venture.

It is a pleasure to introduce Michael Hickson as Robertson's new butcher. He is both young and enthusiastic and has a strong commitment to bring Robertson the best meat at the best possible price.

Michael is also running a recipe of the month competition. Just submit your favourite meat recipe to Michael by 15th September. The winning recipe will receive one of Michael's minted legs of lamb and will be published in the next Newsletter.

### IRISH HOT POT

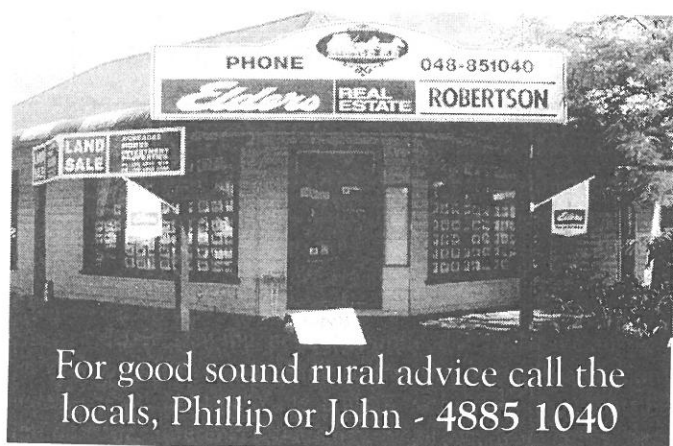
1kg stewing lamb, 3 ¾ cups water, salt and pepper to taste, 500g onions, 2 leeks, 1kg potatoes, 1 tbs chopped parsley

Cut meat into even sized pieces. Place in a casserole dish and add the water. Season with salt and pepper and bring to the boil, removing any scum that rises.

Add the peeled and sliced onions, leeks and half the sliced potatoes. Cover and cook in a moderate oven for about 1½ hours. Add the remaining sliced potatoes and cook for a further half hour. If necessary add a little more water.

Sprinkle the hot pot with chopped parsley and serve.

With the compliments of  
**Robertson Highland Butchery**  
7.30am - 5.00pm Mon - Fri, Sat till 12noon  
34 Hoddle St - Phone 4885 1215  
Free Home Deliveries.



### HIGH PRAISE FOR ROBERTSON GUILD EXHIBITION.

The Robertson Guild Exhibition, recently held at the Foyer Gallery of the Council offices in Moss Vale, has once again generated an enormous amount of praise and appreciation from all quarters. So many people are still finding it almost impossible to believe that so much creative talent and workmanship can exist within such a small village. Well - it most certainly does! And the public at large clearly appreciates it.

Obviously, all of this wide acknowledgement is so very rewarding and provides such excellent publicity both for the Guild itself and for our village of Robertson as a whole.

We extend our warmest thanks and gratitude to those members of the Robertson Guild whose works were displayed and especially to those who, yet again, devoted so many hours of effort and skill to this, the third superb

## Church Service Times

### Anglican

#### St John's Robertson

8.00am Traditional Services - 2nd Sunday- Communion  
4th Sunday- Morning Prayer

9.30am Family Service & Sunday School - Every Sunday

7.00pm 1st & 3rd Sundays - Informal Service

#### St David's Burrawang

8.00am - 1st Sunday (NEW)

### Presbyterian, Burrawang

2.00pm - 1st, 3rd and 5th Sundays

### Uniting, Robertson

9.00am - 2nd & 4th Sundays

### Roman Catholic

#### Robertson

10.00am - 2nd & 4th Sundays

#### Burrawang

10.00am - 1st, 3rd, & 5th Sundays

presentation of the Robertson Guild Exhibition within the excellent setting of the Foyer Gallery. Congratulations. And long may such success continue!



### Contribution Guidelines

Community Service Announcements, articles and diary submissions are free of charge. All items must be submitted by deadline dates and may be modified at the editors discretion. To avoid extensive editing please limit announcements to 25 words, and articles to a maximum 300 words. It is preferable that submissions be typed or emailed. Thank you.

### Advertising

A single insertion is \$30. (Discount of \$5 for members of Robertson Business Association) Each insertion is limited to a maximum 90 x 55 mm. Advertisers are responsible for meeting submission deadlines. Any copy received after the deadline is unlikely to be included. All advertising is payable in advance. All advertisements to Micki Boehme at Robertson Recollections. Thank you for your support.

### Deadline

The next issue will be distributed in the first weeks of October. All advertising & submissions must be received by **15th September 2000**. Forward correspondence to: **Robertson Newsletter, 64 Hoddle St, Robertson 2577, Fax: 4885 2241** or Email: **bjlee@tpg.com.au**. (Submissions are best supplied by email or on disk. Hard copy should preferable be typed) Enquiries - 4885 1210

### Disclaimer

This newsletter is an independent publication under the auspices of The Robertson Business Association. The ideas presented are not necessarily those of the editors nor of the Association. The statement and opinions expressed in this publication are made in good faith, and the editors, volunteers and contributors do not take any responsibility for those statements and opinions, any inferences that may be drawn from them, or actions or charges which may result from them. The Editors reserves the right not to print any item that is defamatory to any person or organisation, or that is anonymously sent, and to edit any contributions as required.

Editor : Barry Lee