

JG

Robertson News

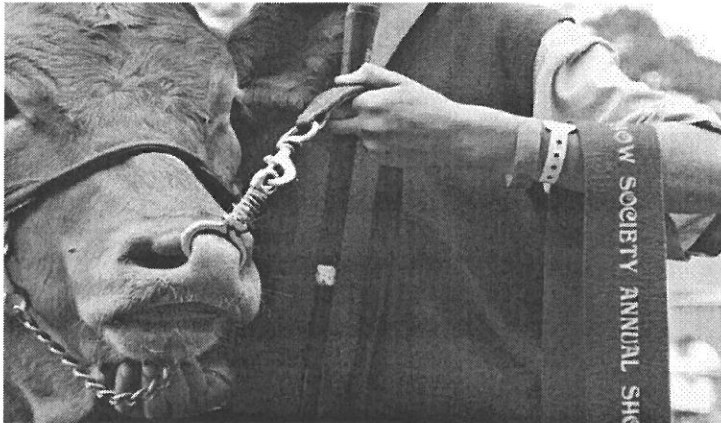
December 2012

Edition 92

www.robertson.nsw.au

ROBERTSON SHOW

BEST LITTLE COUNTRY SHOW AROUND.....



The 2013 Robertson Show (or Royal Robertson Show, as some are now so fondly referring to it as) will be held on **Friday 1st & Saturday 2nd March** and plans are well underway.

As demonstrated last year, the Show will go ahead "RAIN HAIL and most certainly SHINE"....and SUN is what we will be ordering for the 2013 Show. After approx 120mm over 24 hours during show week last year, which caused the cancellation of a couple of the most popular events, including Horses and the Demolition Derby, the Committee are ready and excited to host all the old favourite events plus more....

To kick off "Show Season" the Robertson Show Ball is back by popular demand!.....

February 9th @ The Hindmarsh Pavilion – Robertson Showground.

\$60 p/p – Three course meal – BYO

Live Music – Lucky Door Prizes – Raffles

Tickets go on sale first week January 2013 and are available from Robertson Chemist or Robertson Village Butchery – for more information contact Sue Frost on 0401295609

The last "Robertson Show Ball" was a sell out – so don't miss out – get in quick !

Get a table of your friends (eight per table) or coming alone – you'll be sure to have a great night of fun and dance.

SHOW GIRLS WANTED !!!!

We are searching the district for entrants; this is not a beauty contest or talent quest by any means. It is the chance for one lucky girl to represent Robertson and act as a spokesperson for our town and the Robertson show and progress onto the zone finals (if she wishes); all entrants must be 18-25 and will receive great prizes and having a little fun on the way is the best bonus of all. If you would like to nominate yourself or know of anyone who would make a great ambassador for Robertson, please contact our President Leesa Stratford, the website, or check out Face book for more information.



Have you ever thought of becoming a member of the Robertson Show Society? It is a great way to demonstrate your support for one of the last "True Country Shows" around. Membership (\$15 adult / \$5 child 10-16yrs) gives you entry into the show both Friday & Saturday, your renewal and show schedule are sent to your door each year – so be one of the first to know what is instore for the show. Applications forms available on line or in the show schedule (which will be available early January) .



The Show cannot operate without the huge amount of help received from **volunteers** and the Show Society cannot thank everyone enough for your time and effort. If you have an hour or two to spare on either Friday or Saturday to lend a hand on the BBQ or Gates for example, or for more details on any of the above, please contact: Leesa Stratford 0411 537 600 All details are now available on our website or join our Facebook Page "Robertson Show Society" and keep up to date with all the news.

SEE YOU AT THE SHOW!

robertsonshow@bigpond.com

www.robertsonshow.org.au

Letters to the Editor.

Open Letter, to all Councillors and General Manager, Wingecarribee Shire Council.

Dear Sir/Madam,

I am a ratepayer and Age Pensioner living in the Robertson Village. I received a letter from Council dated 13.7.2012 which was sent to all involved, that an additional charge of \$662 would be added to our 2012-2013 rates. The council stated "The Robertson Sewer Augmentation Scheme is nearing completion with connections to the system to commence in October/November 2012".

I do feel that was a huge stretch of the imagination. Nothing is completed at this point. A testing period must also apply, plus, Christmas/New Year holiday times.

It has been brought to my attention that council has cancelled charges for residents using a Pump Out System (that is unless householder usage exceeds 4500 litre per month). People with Seep Away pay a flat \$662.

My dilemma is my system is a WWT System. Ongoing costs for electricity for pump, maintenance and service applies. Quarterly service is \$65 (Yearly total \$260), recent replacement of pump \$375, and quarterly for electricity \$100 (this would be a \$400 minimum). If you do the sums and put the \$662 into the mix, I'm sure you will see I am paying twice for this service.

The word discrimination certainly would apply in this instance. I believe the addition of this charge on my rates is unfair and unjust in the circumstances. I would appreciate a response from the council as soon as possible in regard to this matter.

Joan Smart.

To the Editor

I would urge Robertson residents to check their valuations from the Valuer Generals office as I have seen many in recent weeks on properties which are many hundreds of thousands over valued. Your rates are calculated on these valuations and your land tax if this is applicable to you.

Judy Fisk
R.J.MACKEY REAL ESTATE

To the Editor

Recently, we had reason to use the facilities of the CTC in Robertson. We were having Internet problems at home and urgently needed to email a document to England. Feeling frustrated and stressed we went to the CTC for assistance. The Manager, Monica Engel was helpful and patient for what turned out to be a difficult and time-consuming task.

We would like to publicly thank Monica for her support.

Pieter and Deirdre Degeling
Burrawang

To view this 3.43min trailer look for 'A Place called Robertson' on the web. Can't wait to see the full thing.

A Place Called Robertson Trailer

'A Place Called Robertson' is a 58 minute documentary which celebrates a small Australian rural village. Two hours south of Sydney NSW, Robertson is perched on the edge of an escarpment 750 metres above the ocean. A Place Called Robertson is an exuberant and whimsical film that takes an affectionate look at the characters who live in a unique Australian country town. The values of these often quirky old-timers rub off on the newcomers who are seeking a tree change. And the new residents discover there is more to Robertson than just trees. Directed, photographed and edited by Tony Williams. Sound and Production by Anna Hewgill.

Pick up your free copy of

Robertson & District Calendar 2013

from most Robertson shops, Post Office and Newsagent

- from mid December

Hang one by the phone.

Produced by Robertson Chamber of Commerce.

Southern Highlands Funerals

Colin and Laurelle Boland

415 Argyle Street, Moss Vale

Phone: 4869 2888

Mobile: 0414 986 988

Email: info@southernhighlandsfunerals.com.au

www.southernhighlandsfunerals.com.au

BOOKS, BOOKS, BOOKS

Books from \$1. Over 4,000 books always in stock, fiction, fact; indeed.....



...books on every subject under the sun!

At Robertson Recollections

26 Hoddle St, Robertson 10.00-5.00 (Closed Wed.)

ROBERTSON HERITAGE RAILWAY STATION AND UNANDERRA TO MOSS VALE RAIL LINE EIGHTIETH ANNIVERSARY

Gareth Ward's Speech to Parliament

Mr GARETH WARD (Kiama) [5.34 p.m.]: I inform the House about the eightieth anniversary of the Robertson Heritage Railway Station and the Unanderra to Moss Vale line held on Saturday 13 October 2012. I am very fortunate to have the beautiful Southern Highlands in my electorate. Along with its beauty, of equal importance is the depth and breadth of heritage in our highlands community. Rail has played a pivotal role in developing farming, business, industry and community in the highlands and continues to be a vital link for trade and commerce. The historic day kicked off with a march from the nearby Robertson school to the station. The march consisted of a piper leading three mounted light horsemen in Boer War regalia, followed by about 50 Robertson Public School children, and then three cars of 1930s vintage.

I met a lot of people on this special day but two wonderful ladies that were a stand-out for me were Violet Lymbery and Gladys Fisk. Violet and Gladys were particularly excited about this historic anniversary as they were still clinging to their original tickets from the maiden trip on 20 August 1932. The line's opening was the culmination of decades of lobbying by highland residents, mainly farmers in Robertson and the surrounding area, for a railway to transport their farm produce to Sydney markets. Later, with the construction of the steelworks at Port Kembla in the late 1920s, representations were made to link the main southern railway with the eastern seaboard, particularly to transport limestone to the new steelworks. Over the 80 years of its operation, the Unanderra-Moss Vale line has been known as the Illawarra Mountain Line and the Mountain Railway Line, amongst other names. This continues to be an important, even vital, link in Australia's railway infrastructure. I am sure members of the House, particularly those who aspired to be engine drivers, would easily fall in love with the 3801 and the beauty of steam travel and transport.

The line was used to carry passengers, but no longer. The last steam-hauled passenger service ceased on 20 February 1967. Steam was replaced by a rail motor but the passenger service ceased altogether on 21 December 1985. The line is still used by tourist trains where passengers are treated to one of the most spectacular railway trips in Australia. Tourist trains often stop at Summit Tank on the way, where beautiful views over the Illawarra escarpment can be observed from the comfort of one's carriage. Over the last couple of years Port Kembla has received vast quantities of coal and grain for export—much of it travelling over the Moss Vale to Unanderra line. The line has also been used for the regular transport of steel products to southern and western destinations. When the main southern or Illawarra lines are closed, it is still used for that purpose.

The line is also used regularly to operate heritage tourism by railway. The Cockatoo Run heritage train brings passengers from Sydney and Wollongong to Robertson and Moss Vale on a regular basis, thus providing additional economic investment in these tourist towns. I am sure the tourism Minister is very interested in this. The New South Wales Rail Transport Museum's Heritage Express also operates steam train specials to Robertson twice a year and they are typically very popular and well booked by tourists in advance, thus providing passengers with the opportunity to travel via the scenic and historic Illawarra line and the Unanderra to Moss Vale line.

Such is the local enthusiasm to preserve and protect this important local heritage that Robertson Heritage Railway Station Incorporated began in 2002. Some inaugural committee members remain on the present day committee. The brief of the committee is to enhance and maintain the station and grounds. This includes station maintenance and the development and maintenance of the garden areas, as well as hosting events like the Spring Fair—which this year is incorporated into the eightieth anniversary celebrations—and the Vintage Car day, usually held in April, and steam train and other tourist train visits. Like most volunteer organisations, the vast majority of work is carried out by but a few. This small band of dedicated individuals should be very proud of their considerable achievements.

I thank and acknowledge committee member Neil Harvey, who did a stellar job organising this very successful event, along with Steve Carey, President of the Robertson Heritage Rail Society, and Robert Goldsack, who acted as the master of ceremonies on the day. I acknowledge my good friend the Federal member for Throsby, Stephen Jones, who also attended the celebrations with his two young children. Mayor of Wingecarribee shire, Councillor Juliet Arkwright, also attended this historic day and continues to represent her residents with distinction. Deputy Mayor, Councillor Larry Whipper, also attended, and I acknowledge his contribution as a foundation member of Robertson Heritage Railway Station Incorporated.

It gives me great pleasure to acknowledge also Vivian Harrison, the principal of Robertson Public School, and all the students of Robertson Public School who participated. I particularly acknowledge the Robertson Public School Choir, which performed with clarity and brilliance. I know that everyone enjoyed their beautiful voices and truly wonderful performance. I acknowledge also the hard work and dedication of committee members Vice-President Ian Wallace, Anne Wilson, David and Helen Tranter and, again, Neil Harvey, as well as all the dedicated volunteers and families who made this day a memorable and nostalgic moment in our Highlands community history.



Photo courtesy of Denis Wilson.

KJM Glass Pty Ltd

All Glass & Mirror requirements

Shower screens & Screen doors & windows

Call Jeff and Kellie Mant

Mb 0400 462666 Fax: 4885 2460

e-mail kjmglass@bigpond.com

CHRISTMAS TWILIGHT SHOPPING



Friday Dec 7th to 7pm

Cheese Room - tasting & orders
Green Heart Gallery & The Cool Room Emporium

Factory Cafe - Open for family friendly dinner

www.robertsoncheesefactory.com

Café Bookings 4885 2468

UPDATE ON ROBERTSON SWIMMING POOL

The 2012 Annual General Meeting of the Robertson and District Swimming Pool Association (RADSPA) was held at the Robertson School of Arts on Wednesday evening 7th November 2012.

Elections for office bearers and the committee for 2012/13 were conducted. President John Thomas and Vice-President Don Ferguson were re-elected, as were Sharon Turner, Treasurer and Sandra Dawson, Secretary. Committee members include Lynn Stevenson and Sharon Makin.

John reported on progress over the preceding 12 months. He expressed the disappointment of the committee and community supporters of the time, effort and resources invested in the negotiations with the various holders of the blocks under consideration, which unfortunately did not come to fruition.

Focus for a suitable site for the pool then turned to the 'Scout' block (Lot 8) on the Illawarra Highway, and the previous D.A was amended for this new site. It was then discovered that during the period of readying the required documents the NSW Aboriginal Lands Council had placed a claim on this block.

The RADSPA committee remains optimistic that negotiations for a suitable site will be resolved in a timely manner.

Monies for the pool have been augmented over the past year through community fund-raising events, collection boxes in Robertson businesses as well as accrued bank interest. Ample funds are available for the construction of the pool. Currently the Everyday account balance is \$611.50 and the Investment Account balance now stands at \$193,704.46, and with interest due in early December, should hit the magic \$200,000.00.

It is a great credit to the many individuals and groups who have consistently supported the concept of the building of the pool and who have raised funds for this specific purpose in the local community over the past almost 30 years.

To have a heated pool located in the town without the need to travel elsewhere will be of great benefit to the whole local community. The indoor facility will cater for learn to swim and training groups, aqua-aerobics, hydrotherapy and gentle exercise as well as recreational swimming.

The Robertson and District Swimming Pool Association can be contacted by writing to the Secretary at PO Box 3059, Robertson NSW 2577.

ROBERTSON OPEN GARDENS

On the weekend of 13 and 14 October 8 residents opened their gardens to the public and we thank each of them for their efforts in preparing their gardens. Along with the other areas of the Spring festival a considerable amount of interest was created and hundreds of people travelled to our village to partake in the activities.

Volunteers from the Robertson Show Society, CTC and the Robertson Rural Fire Service manned the gates of the gardens and these organisations will each receive funds for their support.

The gardeners are to be thanked for the standard of their gardens which drew considerable praise from those attending. There was mention of the gardens and friendly Robertson residents on Radio 2CH the following Monday.

Thanks to the Robertson businesses who purchased advertising space on the tickets. This allowed the tickets to be printed well before the event. As with any community event, success relies on the business community and the local residents.

A large number of Robertson Garden Club members contributed to the success of the weekend and we thank them, especially the Open Gardens committee. Planning for next years open garden has already commenced and we invite any gardeners willing to consider opening their gardens next year to contact the Robertson Garden Club 4885 1368 and speak to Phillip Owen.

Thank you to the community locals who contributed by distribution of the advertising fliers, to the graphic designers of all the posters, tickets and fliers, and to the the numerous people who helped to make this Robertson's best ever Open Gardens.

CHRISTMAS SERVICES

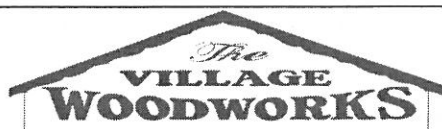
St John's Anglican

Sunday 16th December—5.00pm
Carols—St David's Burrawang

CHRISTMAS DAY

8.00am Communion—Traditional Service

9.30am Family Service—Contemporary Service

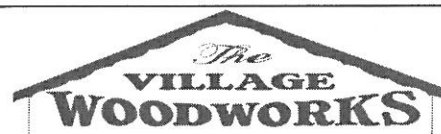


NEW STOCK ARRIVING SOON

- ◆ studio's
- ◆ summerhouses
- ◆ cubby houses

COMPARE THE PRICE & QUALITY!

The Village Woodworks
02 4885 1328



**GAS BOTTLES
for
BBQ & MUSHROOM HEATERS
available now.**

The Village Woodworks.
02 4885 1328

Christmas in Robertson



LOCAL shops offer great variety and value.



Light Horse Gallery - give a beautiful original artwork for Christmas ph 4885 1171

Robertson Recollections - a vast array of treasures for every taste. An antique is a lasting gift. Gift vouchers available Ph 4885 1080

Green Heart Gallery - Australian craft & original art, Honore` leatherwork gifts for him & her. P&S perfume & skincare, Christmas cards Ph 4885 2400 www.greenheartgallery.com.au

Robertson Cheese Shop - Local & imported cheese - gourmet foods & produce Ph 4885 2000



Village Woodworks - Wood, Pottery and Homewares, home of The Robertson Guild & we can refill your BBQ gas bottle for your summer BBQs Ph 4885 1328

Robertson Supermarket & Bottle Shop for the bubbles and the beer & your grocery needs.

Robertson Fruit Market - fresh fruit & veg for the Christmas table.

Robertson Post Office - send all those Christmas cards and gifts early.

Village Pharmacy - for any hangover needs Ph 4885 2936

Eating out

Cafe Pirouette - Relax after shopping with a great coffee. Village Centre BYO Ph 4885 1788

Pizzas in the Mist - wood fired pizzas & pasta dinners, salads & desserts, eat in or take away. Christmas Gift Vouchers available. Ph. 4885 1799

3 Creeks Café - classy café by day fine dining by night. Ph 4885 1889

CTC - great coffee and a great place to meet friends.

Robertson Bowling Club - Open every day. Ph 4885 1306

Robertson Inn - New Owner - New Menu - New Chef. We would love to welcome you to your local pub. Monday \$10 Steak, Locals night Thursday. www.robertsoninn.com.au

For more local details go to www.robertson.nsw.au

We thank you and wish you
HAPPY CHRISTMAS

These businesses are members of the
Robertson Chamber of Commerce.
To join call Dorothy 4885 2400



CTC@Robertson News

Wow there's been a lot happening at your Community Technology Centre over the past few months. We've just held our AGM for 2012 and elected a new committee. We would particularly like to thank Greg Chapman for his years of service both on the committee and as a volunteer. Greg is moving to Moss Vale with his family in 2013.



CTC won a **Southern Highlands Business Award** for Environmental Sustainability! It must be something about Robertson (The show won an award last year). This award was made possible through funds received from the Department of Environment, Climate Change and Water. Many thanks go to David Cooper for managing the project. This project allowed the CTC building to reduce its energy and water use. We had insulation installed in the roof cavity, old CRT monitors were replaced with LCD screens, lighting replaced with compact fluorescent globes, we installed solar hot water and a water collection tank, ceiling fans are used for cooling and air circulation, and the sliding glass doors have all been retrofitted with magnetite (double glazing). We have seen significant reductions in water and electricity use.

In addition, in August 2011 solar panels were installed on the north facing roof. The 1.5kW grid connect photovoltaic system was supplied, designed and installed, as a donation, by Manuel Cilla of Cilectric Pty Ltd. Program management and installation was donated by David RW Cooper Pty Ltd. The system was predicted to cover approximately 25% of the CTC's daily electricity usage. It has actually reduced our most recent electricity usage charges by more than 50%.

The CTC also operates with careful day to management by staff and volunteers. We wear warm clothing in winter, rather than overusing heating, power is turned off on all appliances when the centre is closed, reuse unwanted printing as note paper, compost our kitchen scraps and provide some habitat for small birds and reptiles.

Coming up next Tuesday, December 4 at 7.30pm we will be hosting a talk about Poland.

The speaker is Gordon Markwart and is titled *Why Poland?*

Gordon resigned from his corporate job in Sydney, sold his car and motor bike and went to a remote part of Poland to teach English at the age of 55. While attending Robertson Public and Moss vale high school many years ago he disliked English lessons greatly. But thirty years later he learnt to enjoy English in a totally different way!

This evening Gordon will talk briefly about the history of Poland, and mainly about his experiences and challenges of teaching foreign students of all ages, and a little of his cycling experiences in Poland and Lithuania and how he met a real life Shrek along the way.

Gordon learnt that even with no formal qualifications or experience, a paid English teaching job in the more remote parts of the world is an option for anyone with the right approach.

Gold coin donation appreciated and café open serving Vittoria Coffee.



The CTC started a **computer group** this year for those who missed out on learning to use a computer at school. There will be sessions on Friday mornings from 10.30am until approximately midday, every 2nd week or so. For the small charge of \$10.00 there will be a short presentation on a computer related topic followed by time on the computers with someone available to help out. People can bring their own laptop PC's to these sessions. Morning tea is also included. Contact the CTC to be added to the Computer Group email list. Booking are essential, limited numbers. The program for the remainder of the year follows:

Friday December 7 – Introduction to buying on Ebay with Mary Creagan. We'll cover the rules for buyers, how to find items you are interested in, and how the bidding process works.

Friday December 14 – Selling on Ebay. This will include some of the pitfalls, getting organised with postage or pick-up only, taking photos of your item, describing your item and setting a starting price for your item.

Call in to have a look at our garden. Michael Paull a volunteer (who is currently walking from Sydney to Kosciusko, good luck Michael) weeded this area and planted a herb garden around our water tank. This could be the beginning of a community garden? The plants in the image were supplied by Niall Lambert garden designer and maker extraordinaire. Monica has also been doing a fair bit of garden maintenance and would really appreciate a helping hand. Are there any people out there who would be happy to be on a list to call on for **garden working bees**? It can be a fun way to meet new people and it's a worthwhile contribution to your community. Get in touch to add your name.

The CTC will be closing for Christmas on Saturday December 22 and we'll be re-opening on Wednesday January 23. Merry Christmas to all from the CTC staff and volunteers.

info@robertsonctc.org.au | www.robertsonctc.org.au | <http://www.facebook.com/RobertsonCTC> | 4885 2665

Robertson Electrical Services

ROBERT HANDLEY

mobile: 0419 243 520

'Serving Robertson & District since 1999

lic No. 110210C

- * Underground power
- * Smoke Alarms
- * Stoves
- * Safety switches
- * Hot water
- * Emergency work

FOR SALE

Native Robertson Sassafras Trees

Phone Rob: 0419 243 520

Grow your own piece of the

Local 'Yarrowa Brush' Rainforest

COMMUNITY NOTICES



From the 4th December 2012
Dee Neveling - **Clinical Psychologist**
will be consulting each Tuesday. Referral required.
Chloe Madigan - **Dietitian**
available alternate Wednesdays. Referral required.

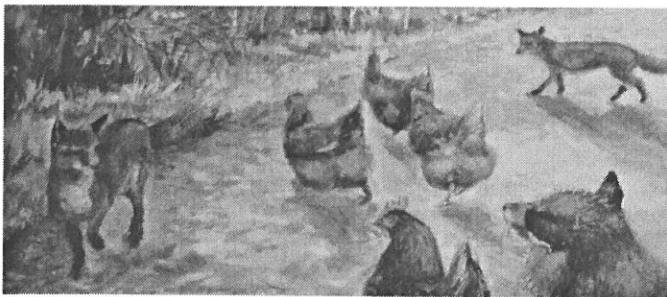
THE FOLLOWING SERVICES ARE ALL BULK BILLED FOR MEDICARE CARD HOLDERS

- Over 75 Health Assessments
 - Healthy Kids Checks
 - 45-49 year old Health checks with baseline ECG done
 - Well Women's Health checks - Pap smears & breast checks
 - Diabetes Care Plan
 - Asthma Care Plans
- Please call 4885 2569 for an appointment.

LOCK UP YOUR CHOOKS!

Mr Fox has been busy around Robertson over the last few weeks - I know at least four people (including me) who have lost all their chooks to a fox, and it is not a pretty sight. So double check your gates and fences and make sure your "girls" don't become an early Christmas dinner for the Fox Family.

Jenny Kena



ADVERTISEMENT



Get in touch with Gareth:
Phone 4232 1082 | Fax 4232 3577
Email kiama@parliament.nsw.gov.au

Authorised by Gareth Ward MP, 125 Terralong Street, Kiama NSW 2533.



JUST THOUGHT IT WOULD BE NICE TO LET PEOPLE KNOW HOW ROBERTSON HAS ALWAYS BEEN COMMUNITY MINDED

Many residents tend to think that infrastructure is put in by Government departments, namely the local Council or State Government departments.

As a local I think that Robertson is very lucky to have, and to have had, many residents who have contributed to our beautiful town and the area.

The Hockey and Soccer field land is owned by the council but the locals contributed, by working, the use of their machinery, sowing grass seed, irrigating with private machinery and making these fields for the community.

The Tennis courts have been provided by the Robertson Tennis Club, the lighting and the all weather courts.

The Scout Hall was built by the people.

The Lions Club Park was beautified by the Lions Club of Robertson

The Robertson School of Arts, for which the committee tirelessly work and to which they contribute.

Carrington Falls Trust where voluntary work made sure that toilets were clean and people were safe.

The Fire Brigade, all volunteers who give their services any time day and night.

The Show Society who work tirelessly for an important community event and facilities.

The Football club who built or contributed to the toilet block and change room facilities at the Showground

The Robertson Bowling Club which started on a small parcel of leasehold in Caalong Street and now has a larger new facility with Bistro, Synthetic Green and many other facilities which can be enjoyed by all.

There are the funds for the swimming pool which have been raised by the community since the 1980s with many, many people standing on stalls and selling raffle tickets. One day we hope that this will eventuate.

Street Tree plantings and bulb plantings with the help of the Robertson Garden Club, Robertson Chamber of Commerce and many other community minded people and groups.

The Robertson Signs were added to the entrances by the Robertson Chamber of Commerce. This Robertson Newsletter and the Robertson & District Calender is provided by the Chamber.

The good souls who always walk and collect the rubbish blown onto the streets and those who have mowed the footpaths and verges continuously.

There were also in days gone by the CWA, the Junior Farmers, boys club and the Robertson Vegetable Growers association.. Not forgetting all the sporting clubs such as soccer, tennis, hockey, football with their volunteers, referees coaches, trainers and their cheer squads including the mums and dads.

I would like to know of anymore I may have forgotten to add to the list of all our community minded people who have contributed and are contributing to this great place. I have not excluded, maybe just forgotten, some wonderful people and groups, so I apologise for any not listed.

See what a great place we have.. Judy Fisk

To Let - Robertson

3 Bedroom cottage, wood fire, town water, fenced rear yard - \$350 pw.

4 Bedroom, ensuite, town water, wood fire, reverse cycle \$450 pw

6 Bedroom, garage, ensuite, study, reverse cycle \$550 pw

Our Office is open every day (Except Christmas Day)

R J MACKEY Real Estate



Robertson

Phone: 4885 1329

Email: rjmackeyre@bigpond.com

Fountaindale Grand Manor gives a sigh of relief that it isn't duck hunting season!

Why – because **Phatt Duck Enterprises** is winging its way to Fountaindale Grand Manor...

Yes, Fountaindale Grand Manor is now complete as every grand manor should have a Phatt Duck (aka Stephen Crooks) in its thriving kitchen - and you must admit that most people love a duck!

Imagine Phatt Duck

- Accompanied by local produce
- Garnished with his homemade sauces
- Served with good wine, and
- Surrounded by his homemade pickles

Well, perhaps not – but what Phatt Duck and his band produce will entice you and leave you satisfied.

Phatt Duck lands at Fountaindale Grand Manor on Saturday 19th October 2012 and will begin his menu creation designed to breathe new life into Fountaindale Grand Manor's kitchen.

Saturday's dinner offerings include:-

Entrée

Pea & Mint Risotto Balls with House Aioli & Snow Pea Sprouts
Potato Pan Cake with Smoked Atlantic Salmon & Dill Cream

Main

Fish Pie with Dutch Carrots and Greens
Moroccan Chicken on Couscous with Dutch Carrots and Greens

Dessert

Armenian Friendship Cake with Cream
Chocolate Meringue Cake

And so it begins...

Watch this space for more exciting adventures of Fountaindale Grand Manor and the Phatt Duck

Note:

Fountaindale Grand Manor has been a Southern Highlands icon since the 1920's when the impressive building was built atop a hill in 1924, one of the most luxurious hotels of its time. From its elevated position and set on 14 acres it commands breathtaking views of the valleys below, all the way to the ocean. The Manor has been lovingly maintained and retains its period charm, providing you with just the right mix of past and present.

Anglican

St John's Robertson

8.00am Traditional Services
1st Sunday- Communion
4th Sunday- Morning Prayer

9.30am Family Service/Sunday School
Every Sunday

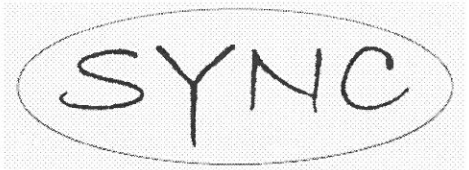
St David's Burrawang

5.00pm - 3rd Sunday

Roman Catholic

Burrawang

1st, 3rd, 5th Sundays – 8.00am
2nd & 4th Sundays – 5.00pm



Sunday Youth Night Church

1st Sunday of the Month

It's for everyone around high school age, starting at 6:30pm. We finish around 7:30 and then have some food till about 8pm.

Come and check it out – we are in the new building on Meryla Street Robertson, behind the old church building.

More info?

Call Jon Bracht on 4886-4326

Contribution Guidelines

Community Service Announcements, articles and diary submissions are free of charge. All items must be submitted by deadline dates and may be modified at the editors discretion. To avoid extensive editing please limit announcements to 25 words, and articles to a maximum 300 words. It is preferable that submissions be typed or emailed. Thank you.

Advertising

A single insertion is \$35. (Discount of \$5 for members of Robertson Chamber of Commerce) Each insertion is limited to a maximum 85 x 55 mm. Advertisers are responsible for meeting submission deadlines. Any copy received after the deadline is unlikely to be included. All advertising is payable in advance. All advertisements to Dorothy Baker at the OPSGallery now at the Robertson Cheese Factory ph/fax 4885 2400 or POBox 3005 Robertson 2577. Thank you for your support.

Deadline

The next issue will be distributed in the first weeks of February. All advertising & submissions must be received by 15th January 2013. Forward correspondence to: Robertson Newsletter, 64 Hoddle St, Robertson 2577, or Email: bjlee@dodo.com.au. (Submissions are best supplied by email or on disk. Avoid formatting text as much as possible. Hard copy must be typed) Enquiries - 4885 1210

Disclaimer

This newsletter is an independent publication under the auspices of The Robertson Chamber of Commerce. The ideas presented are not necessarily those of the editors nor of the Chamber. The statement and opinions expressed in this publication are made in good faith, and the editors, volunteers and contributors do not take any responsibility for those statements and opinions, any inferences that may be drawn from them, or actions or charges which may result from them. The Editor reserves the right not to print any item that is defamatory to any person or organisation, or that is anonymously sent, and to edit any contributions as required.

Editor : Barry Lee