



J6

Robertson News

June 2012

Edition 89

www.robertson.nsw.au

Fountaindale Grand Manor hosts a winter *extravaganza*. Saturday 30th June to Tuesday 31st July 2012

For four weeks, this historic building will be transformed into a winter wonderland complete with ground floor dining and first floor shops.

A special attraction will be the 17 x 18 meter ice skating rink in the garden during the first two weeks of the school holidays, Saturday 30th June to Sunday 15th July. A 45 minute session will cost adults & children 12 years and over \$15, which includes skate hire. Sessions start at 1030am.

There will also be farmyard animals for the younger children, miniature train displays and vintage toys.

The grounds of Fountaindale will be filled with festive displays both for daytime and nighttime when the garden will be lit up. Lots of fun and laughter to be had by all!

Entry gate price is \$5.00 per person, children 11 years and under are free.

On Saturday 21st July the heritage Steam Train 3642 will visit Robertson and Fountaindale.

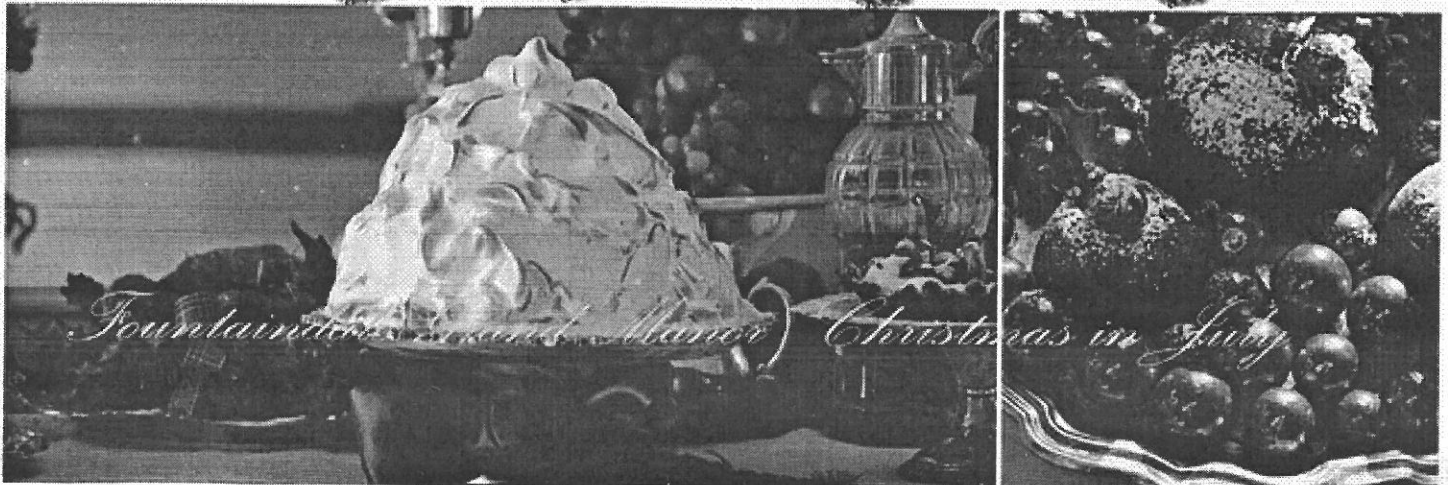
Throughout the month, guests will be have a choice of elegant Christmas a la carte, traditional Christmas buffet and stylish High Tea or Devonshire tea. 'Robertson Newsletter' has been told that over 2,000 bookings have been taken so far. Exciting news.

The Sydney Morning Herald is running a promotion that will encourage many Sydney siders to visit Robertson. Robertson Chamber of Commerce has plans to showcase the village and its many attractions including our traditional annual events of Robertson Show and the springtime Open Gardens.

For more information on the 'Christmas in July' events at Fountaindale go to www.fountaindalechristmasinjuly.com

The last time the snow settled over the Southern Highlands and Robertson was July 2004. Lets hope the magic of winter falls again this year.

FOUNTAINDALE GRAND MANOR



Letters to the Editor.

A CONCRETE COLOSSUS

I'm sure that, like me, many residents of Robertson will have been amazed at the months of epic construction works that have resulted in the appearance of that grand concrete edifice at the west end of town that is, apparently, a railway crossing.

Judging by the amount of time and labour, and the astonishing amount of concrete that has gone into the project, I find it easy to believe the rumours that the cost approaches half a million dollars.

I am trying to find out, from various authorities, the exact amount.

At most, there can be no more than 5 or 6 people per day who cross the line here. And, if they do, they mostly walk along the main road, as there are no footpaths either side of Sassafras Way or the highway.

May I suggest that, if Council and State Government are concerned about safety in Robertson, there are many more urgent priorities they may like to look at?

For instance, there is no pedestrian crossing at the railway in Meryla Street. There are no footpaths either, on this narrow road. Yet, unlike the west end crossing, this one is used by many people every day. It is the primary pedestrian access from South St. to the central village. It is used by many children every day on their way to school.

Another dangerous place, in a high traffic area, is the lower end of Caalong St., where the footpath coming down the hill ends abruptly, just past the bridge. The many pedestrians must choose to continue through wet grass and mud, or walk on the road, to get to the traffic lights and the school.

There is no safe pedestrian crossing at the east end of town either, and no footpath on the north side of the highway. As a result, I regularly see children walk the length of the village through grass and mud, or actually on the road, to access the only safe crossing point to the school.

Many more people are in constant danger in the three cases I've outlined above. I think that, as tax payers, we have a right to know how a clearly quite peripheral project has

won such massive resource support, while much more urgent safety needs are ignored?

By and large all of central Robertson has decrepit, failing or non-existent footpaths - yet these grand concrete gestures keep materialising at the extremities of the village

I also believe that, far from reducing the danger, the new west-end crossing will actually add to it. The high railing means the crossing can only be accessed by walking out onto Sassafras Way, at a point blind for traffic turning left from the highway. Similarly, the crossing terminates in a private drive, beyond which is a deep chasm. So pedestrians must again cross the road to continue their journey. (except at night, of course, when they may just walk on into the chasm!) Admittedly, crossing the road only gets you to a grass/mud verge - there is still no footpath - but at least it's flat. This crossing point is also partly obscured to traffic by the crossing itself. The kerb and guttering also seems to have reduced both the width of the entry into Sassafras Way for cars, creating a bottleneck, and to have cribbed part of the already narrow width of the highway itself.

Of course, all civic improvement is welcome, but one surely must question the way in which priorities are set. Surely, at least our locally resident Councillors might have stepped in to point out all the many more urgent ways in which this money could have been spent.

Sincerely, Micki Boehme

Editor.

I suspect that the answer to some of Micki Boehme's points about the new railway crossing have to do with the RTA and Railways being responsible for that particular danger spot while the others are the responsibility of our local council. The pedestrian use may be small but the volume of traffic is large because it is on the highway and not a side street as is the case with the Meryla St crossing.

However, Micki has highlighted the need for our local council to address the significant safety issues that exist in the village and that it is high time the council looked at linking up some of the odd bits of footpath they have thankfully installed in recent times. It might also be time for them to lobby the RTA for more pedestrian crossings over the highway rather than the single one at the school.

To add to the Story

Half of Robertson is already being dug up for the sewerage. More is being dug up at the eastern end for the shared footpath.

Work has started on Stage 3 of the shared pathway passing the Robertson Cheese Factory to the Post Office and then widening the existing footpath in front of the fruit shop and chemist. There is also a proposed 2.5 m wide footpath in front of the supermarket.

Crossing Hoddle Street between the Supermarket and the Post Office will be safer, there will be a pedestrian refuge in the centre of the road. Lighting will be brought up to Australian Standard for the safety of pedestrians crossing at the refuge.

Frank Iacono, WSC Transportation Planning Engineer told Robertson Chamber of Commerce that new bus stops will be located outside the supermarket on the north side with a new bus shelter and near the chemist on the south side, with the possibility of a bus shelters in the future.

WSC received grant funding from NSW State Government for the bus facilities & shared path. Work is expected to be completed by the end of June, depending on the weather.

Also proposed is an extension to the parking next to the Post Office by Pinkwood Park. Frank Iacono assured RCoC that the Waratahs and trees in Pinkwood Park would not be damaged.

Joining the pathways from one end of Robertson to the other however, is still a long way off.

Dorothy Baker RCoC



R J MACKEY Real Estate

Robertson

Phone: 4885 1329

"Ackworth" 4970 Illawarra Highway

Email: rjmackeyre@bigpond.com

Web: www.rjmackeyre.com.au

Robertson \$865,000

Two x Weatherboard houses, both in need of renovation, excellent ocean views, expansive north easterly views of the surrounding countryside, permanent spring fed creek, natural rain forest set on 9 acres.

Must inspect, views to take your breath away!

YEAR OF THE FARMER EXHIBITION

We do hope that you enjoyed the exhibition which was in the foyer of Wingecarribee Shire Council, Moss Vale (for the month of May, 2012). The exhibition of farming life and memorabilia was put together by members of the farming community of Robertson and District in conjunction with Robertson Chamber of Commerce. A great 'Thank you' to Judy Fisk and her team for her efforts and enthusiasm in organising the delightful showcase.

This was one of the many initiatives of the Robertson Chamber of Commerce.

If you would like to become a member of the Robertson Chamber call Dorothy on 48852400 or Judy 48851329

DOG POISONING INCIDENT

An incident of attempted 'dog poisoning' on 21st April, has been reported to the police.

It is sad that this could happen in such a friendly village, it puts children and wildlife in danger too.

If you have any information or been the victim of a similar incident please contact the Bowral police on 4862 9299

Wingecarribee Shire Council is seeking comment from the community on the draft 2012/13 Operational Plan and Budget

The Operational Plan highlights Council's major program of works for the forthcoming financial year including:

- The construction of the Moss Vale Indoor Aquatic Centre
- Civic Centre refurbishment
- Pool renewal upgrade strategy
- Local roads resealing programme
- Robertson Sewerage Scheme

Have Your Say

You can have your say and access the following draft documents at <http://yoursaywingecarribee.com.au/draft-201213-operational-plan-and-budget>

- 2012/13 Operational Plan (including budget and revenue policy)
- 2012/13 Fees and Charges

The deadline for comments is 10 June 2012.

The final plan and budget will be adopted by Council at the Ordinary Meeting of Council on Wednesday 27 June 2012.



Colin and Laurelle Boland

415 Argyle Street, Moss Vale

Phone: 4869 2888

Mobile: 0414 986 988

Email: info@southernhighlandsfunerals.com.au

www.southernhighlandsfunerals.com.au

Cool Winter Café time ~ Robertson

Robertson has a wonderful choice of cafés and restaurants but they all have different hours. This list may help when you need a coffee or don't feel like cooking.

Café Pirouette

Open 7 days for breakfast and lunch 7am to 4pm : weekends 8am to 4pm

Chats Café

Open 7 days for breakfast, lunch and dinner 7am to 7pm : Sunday 7am to 5pm

Three Creeks Café

Open 7 days : 9am to 3pm breakfast, coffee and lunch.
Friday & Saturday 'a la carte' dining from 6pm
Tuesday Trivia & dinner from 6pm

Café @ Robertson Cheese Factory

Closed for renovations until further notice.

Pizza in the Mist

Take away 7 nights from 5.30pm
Wednesday to Saturday Restaurant from 5.30pm
Sunday Lunch from 11am

Robertson Bake House

Coffee and cakes Monday to Saturday 6am to 5pm

CTC

Internet café 10am to 4pm Wed to Sat

Robertson Bowling Club

Dinner 6pm to 9pm 7 days (closed Tuesday for lunch)
Coffee 11am to 10pm

Robertson Inn

Open 7 days. Coffee 10am to late : Dinner 6pm to 9pm

Fountaindale Grand Manor

Devonshire Teas 10am -4pm 7 days (except Saturday 10am -2pm)
High Teas daily in July
(High tea by reservations on Sundays in June and August)

The Tin Hare

Great New Shop next to the General Store

Gifts, Jewellery, bags, furniture, clothing and a lot more.

OPEN every day except Wed.

Ph: 0431613469

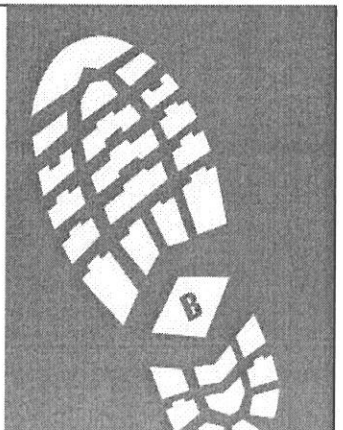
email: thetinhare@gmail.com

ben papandrea CONCRETOR

ABN31856718518
LIC137005C-211461C

po box 3007 robertson 2577
papandrea@idx.com.au

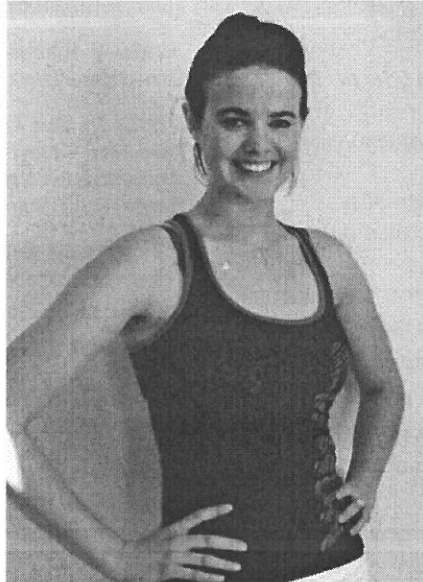
0422 849 111
4885 2379



**ZUMBA
COMES TO BURRAWANG AND ROBERTSON.**

Local girl, Miriam Giles (nee Griffiths) brought "Zumba" classes to Burrawang and Robertson in April of this year. Miriam has been arranging her own dance routines from about the age of five. Her parents could see her love of the art and she began ballet classes at the age of seven. Although Miriam still has a strong interest in ballet, she decided to branch out, try something new and took lessons in Zumba. Earlier this year, she obtained her certificate to teach.

Zumba is a Latin dance-inspired fitness programme created by Colombian dancer and choreographer Alberto "Beto" Perez in the 1990s. Zumba involves dance and aerobic exercises. It incorporates hip-hop, soca, samba, salsa, merengue, mambo, martial arts and some Bollywood and belly dance moves. Squats and lunges are also included. It is a fun and effective way to burn calories, tone and sculpture the body and includes cardio-based movements.



Classes are held on Mondays from 9.30am to 10.15am at the School of Arts, Hoddle Street, Burrawang and on Tuesdays from 9.30am - 10.15 am and then Thursday 6.30pm to 7.15pm. at the School of Arts, Illawarra Highway, Robertson.

A percentage of the money Miriam receives will be given to a charity.

Anne Carter

Slab Sale & BBQ

On 9th June, the Saturday of the long weekend, the Village Woodworks will be having the annual timber slab sale with a range of slabs and blocks of timber for sale.

In conjunction with this we are also starting the service of refilling BBQ gas bottles and will be having special introductory prices for this service.

Kleenheat gas will be putting on a

BBQ/Sausage Sizzle

from

11am -2pm Saturday

9th June

with all proceeds to go to the

ROBERTSON RURAL FIRE SERVICE.

Neil Atkins

THE VILLAGE WOODWORKS
4872 Illawarra Hwy,
Robertson NSW 2577
02 4885 1328 ph/fax

Ladies! Come join Zumba.

It's a fun and effective way to burn calories, tone and sculpt the body combining Latin inspired rhythms and cardio-based movements.

Great for all ages and easy to follow.

Miriam Giles, Instructor
School of Arts, Robertson - Tue 9.30am -10.15am,
Thurs 6.30pm -7.15pm
School of Arts Burrawang -
Monday, 9.30am -10.15am

Contact Miriam 0466 361 586
miriamgiles1@gmail.com



BOOKS, BOOKS, BOOKS

Books from \$1. Over 4,000 books always in stock, fiction, fact; indeed.....



...books on every subject under the sun!

At Robertson Recollections

26 Hoddle St, Robertson 10.00-5.00 (Closed Wed.)

Pizzas in the Mist

Fully Licensed Restaurant

Sunday Lunch

From 11.00am

Take Away also available

Your Choice of
Traditional & Gourmet Wood Fired Pizzas
Chefs Specials
\$20 Pasta & Wine Menu
Desserts & Coffee

Gluten Free Pizza and Meals available

4885 1799

Click "like" on our Facebook page to WIN our monthly Dinner for Two!



COMMUNITY NOTICES

ROBERTSON COUNTRY MARKET

Held at School of Arts
2nd Sunday each Month
February—December
9.00am—3.00pm
Good Variety of Stalls
New Stalls always welcome

Contact Edna Casey—4885 1216

Look forward to SPRING and a FUN WEEKEND in OCTOBER!

Open Gardens in Robertson

Saturday and Sunday 13th & 14th October
Visit 9 local gardens over the weekend.
For more information visit
www.robertson.nsw.au/whats-on

From the 4th to the 19th of October some Robertson gardens can be opened for coach visitors.
(contact Phillip Owen, (02) 4885 1368, yarrowa@westnet.com.au)

Heritage Railway Station

Saturday 13 October
80th Anniversary of the Building of the Illawarra – Moss Vale railway line.
A double header steam train visit. For more information visit
<http://www.robertsonrailway.com.au/>

Aussie Ladies Tractor Run

Street parade
Old Machinery Club
Sunday 14 October
For more information contact
Pauline McFetridge, 0412 819848, pmcfet@aol.com

CLEAN ENERGY OPTIONS FOR ROBERTSON

An informal conversation on the available options
— Robertson Community Centre,
Friday Evening, June 8th, 8pm
Discussion Leader: David Tranter

Energy costs are rising fast due mainly to expenditure on the grid to meet peak demands by energy-hungry appliances like air conditioners.

How can we reduce our energy costs?

- Energy efficient life styles? – Are dishwashers really necessary?
- Smart metering? – Can we do it ourselves?
- Rooftop Solar Water Heating? – Are electric ones energy guzzlers?.
- Photo-voltaic energy generation? Are PVs are becoming much cheaper?
- Smart (LED) lighting? – Is point lighting better than space lighting?
- Energy-efficient retrofitting? - Insulation and curtains (with warmth saving pelmets)?
- Passive solar house design? – “A House for all Seasons”, published by REPS.
- Small, home-made vertical axis wind turbines? – Using old washing machine parts?
- Micro-hydro energy generation?
- Sheepwash Road Pumping Station?, Robertson Sewage Treatment Plant?
- Public transport?? – How can Robertson people get around the Shire without cars?
- Electric cars? –Who will make the first move to install battery charging stations?
- Energy efficient farming Incentives? – ? Planting more trees.? Reducing soil emissions?
- Site Demonstrations?
- And so on.

Come along and bring your Questions and Knowledge. All welcome.
Refreshments (Gold Coin Donation)

An evening for Women
Friday 3rd August 2012 at 7.30pm
St John's Church Centre
Meryla St, Robertson
Enquiries Anette lee 48851210



love & tears
autism



Hear author
Cecily Peterson
speak about her family's journey
following their son's diagnosis
with autistic spectrum disorder.

ADVERTISEMENT



Gareth Ward MP
Member for Kiama

Working for Robertson

Get in touch with Gareth:
Phone 4232 1082 | Fax 4232 3577
Email kiama@parliament.nsw.gov.au

Authorised by Gareth Ward MP, 125 Terralong Street, Kiama NSW 2533.



Robertson Electrical Services

ROBERT HANDLEY

mobile: 0419 243 520

'Serving Robertson & District since 1999
lic No. 110210C

* Underground power * Smoke Alarms * Stoves
* Safety switches * Hot water * Emergency work

Let the Highlands Theatre Group warm you up this winter with their rendition of the hilarious BBC sitcom *Fawlty Towers*.

Join Director Andrew Forbes and his comical team of actors at the seaside town of Torquay, on the 'English Riviera'.

Get ready to be amused by the rude and deranged manager Basil Fawlty, his bossy wife Sybil, chamber maid Polly and of course the hapless Spanish waiter Manuel, as they attempt to run the hotel, amidst farcical situations & eccentric guests.

You'll be in stitches with the famous antics portrayed in the two scripts "The Germans" & "Communication Problems", written by John Cleese & his then wife Connie Booth who both starred in the original show.

DIRECTOR: Andrew Forbes

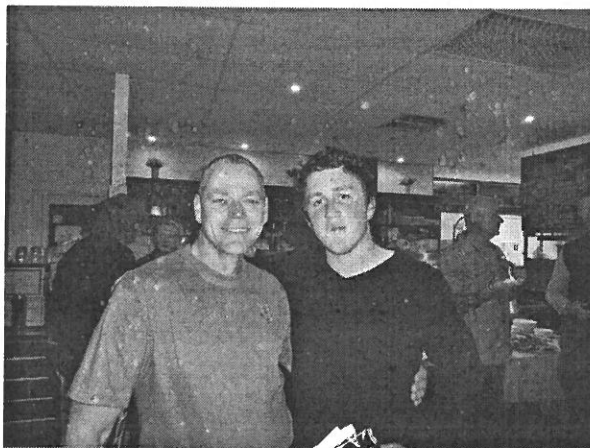
WHERE: Mittagong Playhouse, Bowral Road,

WHEN: Mittagong June 22, 23, 29, 30 and July 6, 7 @8pm June 23, 24, 30 and July 1, 7 @2pm
TICKETS: \$18 special -all tickets for opening night \$22 (adults), \$20 (concession), \$18 (group bookings 10 people minimum for one performance) & \$69 (family - 2 adults & 2 kids/\$5 per extra child) Book online at www.htg.org.au and click on the yellow 'BOOK' button Tickets can also be booked at *Southern Highlands Tourism on 1300 657 559 *booking fee applies

Come for a laugh at the Mittagong Playhouse this June and July!

Farewell to Max.

Max Benaud having completed his apprenticeship with local butcher Darryl Veivers, is heading north to Queensland. He will obviously be missed with local residents taking the opportunity to wish him well at a gathering at Café Pirouette on Wednesday 30th May.



Contribution Guidelines

Community Service Announcements, articles and diary submissions are free of charge. All items must be submitted by deadline dates and may be modified at the editors discretion. To avoid extensive editing please limit announcements to 25 words, and articles to a maximum 300 words. It is preferable that submissions be typed or emailed. Thank you.

Advertising

A single insertion is \$35. (Discount of \$5 for members of Robertson Chamber of Commerce) Each insertion is limited to a maximum 85 x 55 mm. Advertisers are responsible for meeting submission deadlines. Any copy received after the deadline is unlikely to be included. All advertising is payable in advance. All advertisements to Dorothy Baker at the OPSGallery now at the Robertson Cheese Factory ph/fax 4885 2400 or POBox 3005 Robertson 2577. Thank you for your support.

Deadline

The next issue will be distributed in the first weeks of August. All advertising & submissions must be received by **15th July 2012**. Forward correspondence to: Robertson Newsletter, 64 Hoddle St, Robertson 2577, or Email: bjlee@dodo.com.au. (Submissions are best supplied by email or on disk. Avoid formatting text as much as possible. Hard copy must be typed) Enquiries - 4885 1210

Disclaimer

This newsletter is an independent publication under the auspices of The Robertson Chamber of Commerce. The ideas presented are not necessarily those of the editors nor of the Chamber. The statement and opinions expressed in this publication are made in good faith, and the editors, volunteers and contributors do not take any responsibility for those statements and opinions, any inferences that may be drawn from them, or actions or charges which may result from them. The Editor reserves the right not to print any item that is defamatory to any person or organisation, or that is anonymously sent, and to edit any contributions as required.

Editor : Barry Lee

Anglican

St John's Robertson

8.00am Traditional Services

1st Sunday - Communion

4th Sunday - Morning Prayer

9.30am Family Service/Sunday School
Every Sunday

St David's Burrawang

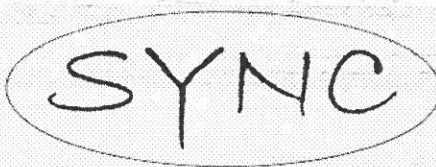
5.00pm - 3rd Sunday

Roman Catholic

Burrawang

1st, 3rd, 5th Sundays - 8.00am

2nd & 4th Sundays - 5.00pm



Sunday Youth Night Church

1st Sunday of the Month

It's for everyone around high school age, starting at 6:30pm. We finish around 7:30 and then have some food till about 8pm.

Come and check it out - we are in the new building on Meryla Street Robertson, behind the old church building.

More info?

Call Jon Bracht on 4886-4326