

Robertson News

June 2013

www.robertson.nsw.au

Edition 95

Wingecarribee Swamp Fire January 2013

The swamp / peat fire that happened at the Eastern end of the Wingecarribee swamp in January this year was an Environmental challenge for both the Sydney Catchment Authority and the New South Wales Rural Fire Service.

The initial Fire, that was effectively a running grass fire, was dealt with quickly. With resources such as water bombing helicopters and fire trucks from across the Wingecarribee District and Illawarra Fire zones, we were able to "knock down" the primary Fire within hours of the first Fire truck arriving on site.

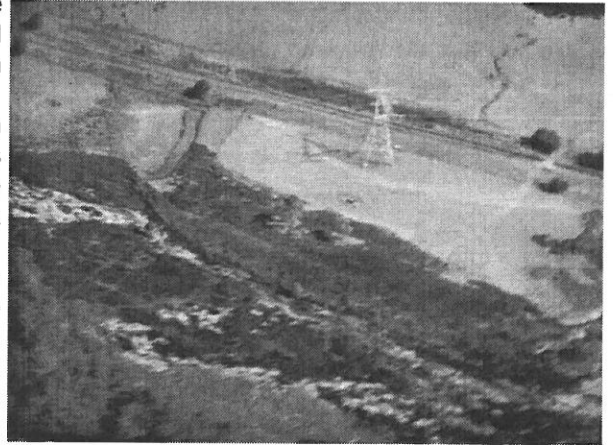
This fast and coordinated fire attack, managed by the Rural Fire Service with the assistance of the Sydney Catchment Authority, meant that at no stage was there any real danger to neighbouring rural properties or the villages of Robertson and Burrawang. After the initial fire had been dealt with, the RFS handed back the primary management of the fire to the SCA (Sydney Catchment Authority). Over the following weeks the SCA (with assistance from the RFS) developed a plan to manage and extinguish the secondary peat fire.

Dealing with a fire in peat has many difficulties. The SCA established a series of ground based water sprinkling devices aimed at cooling the peat. This was done with a number of portable fire fighting pumps utilizing the ample ground water available on site and pressurizing it through a series of hoses and out through commercial size sprinkler heads. At the same time as this was happening it was essential to confirm the exact area of the fire in the peat. This was achieved with the assistance of the RFS's hand held Thermal camera as well as a helicopter with a Flir (Thermal imaging) camera. This cutting edge technology became essential in mapping the precise area of the peat that was still on fire.

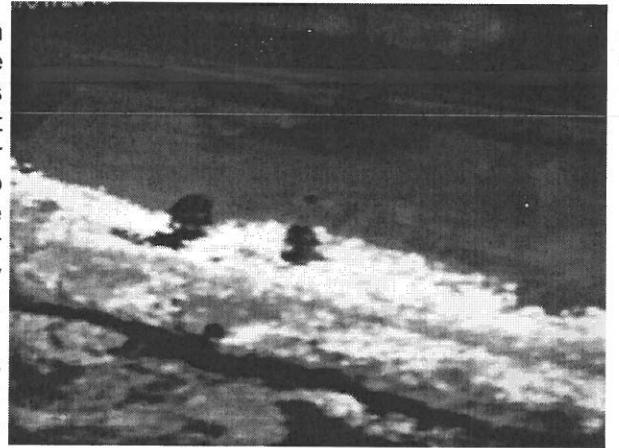
Once the area of peat on fire was established the remaining variable was the depth of the fire in the peat. Peat, known in many areas of the world as "Bog" can be metres deep. The only way to determine the depth of the fire in the peat was to "pothole" at specific locations. This process verified that the depth of the fire was only in the top layer of the peat. With all these variables known it was just a matter of "raining" copious amounts of water over the peat hotspots.

Given the weather conditions in the last few months and the onset of the Autumn season this fire is now unlikely to reignite.

Brendhan Waters Captain - Robertson Rural Fire Brigade.



The area of the fire.



Thermal image of the fire in the peat.

The premiere of the movie *A Place Called Robertson* on 15th March raised over \$4000 which was donated to the Robertson Rural Fire Brigade and the Robertson Show by Anna and Tony Williams. Many thanks to the people of Robertson for supporting this event.



Letters

The August edition of the Newsletter may not be printed until the second week of August due to the editor returning from overseas. Please bear this in mind when submitting articles and that events being advertised do not precede this date.

Dear Mayor and Councillors,

Hopefully you have all had the opportunity to watch the documentary 'A Place called Robertson'. It captures the essence & atmosphere of village life that residents and business treasure.

Nobody wishes the village to grow 'too big' however some careful development is essential to sustainability & preventing decline. The major stumbling block has always been lack of a sewage system. We thank you that this has been rectified.

It is now time to consider the proposals we put to council in the past, namely the sub-division of the 2000 m2 blocks within easy walking distance of the school - Doctor - supermarket - chemist - Post Office, which would allow young families & aged residents to move to small and ecologically efficient housing & be less reliant on cars and public transport.

CirWhipper and I spoke of this prior to a public meeting, he informed me that when the sewerage is completed the Council would re-visit the sub-division issue.

I draw your attention to the Local Planning SWAT report of 12 Aug 2010 and to the RCoC's DCP submission especially pages 7 & 8.

We, Robertson Chamber of Commerce, ask the Wingecarribee Shire Council to actively support sub-division proposals within the centre of Robertson village.

kind regards
Dorothy Baker
RCoC President

A Place Called Robertson-Future Vision.

What comes across most clearly from Tony and Anna Williams' Film "A Place Called Robertson" is the Robertson community itself. Built by generations, enriched by newcomers, the mixture of cooperation, friendliness, 'smile and wave' make Robertson special for locals and visitors.

You cannot buy community. It has to be built and nurtured. Then it is priceless. We owe heaps to those who built what we now live in. This is a solid foundation, but where do we go next?

The future of the world into which Robertson will grow will be a world where, like our ages, taxes, and prices are going up. That is determined well beyond Robbo. Our community can't stop world costs rising. We can't insure against those costs. But we do have priceless resources to offset against those rising costs. We have our community, our soil, our climate and many inventive people. So what could we do with the cost drain on one side and the riches within on our side?

Can you imagine a vision of future Robertson growing more of our own food, providing employment, cutting down on isolation, managing local banking, keeping older people here rather than sending them off away somewhere? No it would not be some pie in the sky hippy commune. But it would be a more self-

sufficient village community.

Some of the bits of the vision could include community gardens, providing transport, swapping time to help neighbours with d.i.y jobs, co-operative buying, bringing young and old together, visiting the older ones, hobbies shared, meals on wheels etc. The services possible are as numerous as our needs, imaginations and resources.

Governments want to help with "inclusion" and maybe we could ask for a bob to help ourselves, maybe in years to come Robbo could help others how to build their own communities.

If you think this is all a bit pie in the sky or pie in the mist, think again. There are several places in the world we could learn from, several people in town and in Australia with resources and experience we could use.

Robbo will grow; it is up to us as to whether it grows for our benefit or against. For the moment it would be good to discuss ideas, to yarn about building a nurturing, affordable future Robertson.

Michael D. Breen
Caalong Street.

Counselling

Sometimes want someone to talk to or about what is important to you? A professional with training, experience and understanding. With privacy and security. Helping you find your own answers, not tell you what to do. You could talk to a counsellor.

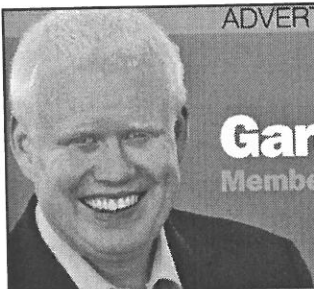
Michael D. Breen B.A., STL, Med., JP.
Counselling Psychologist
Tel. 48852180 - Internet: iwritemiway.com

KJM Glass Pty Ltd

All Glass & Mirror requirements
Shower screens & Screen doors & windows

Call Jeff and Kellie Mant
Mb 0400 462666 Fax:4885 2460
e-mail kjmglass@bigpond.com

ADVERTISEMENT



Gareth Ward MP
Member for Kiama

Working for Robertson

Get in touch with Gareth:
Phone 4232 1082 | Fax 4232 3577
Email kiama@parliament.nsw.gov.au

Authorised by Gareth Ward MP, 125 Terralong Street, Kiama NSW 2533.



VINTAGE & CLASSIC CAR DAY

Well another Vintage Car Day has come and gone and it was again a great success. This was the fifth of these autumn events we have hosted. The 2013 event on Sunday 14th April dawned fine and sunny to our great relief. The hardy band of railway volunteers set about preparing for the day: putting up marquees, setting out signs, creating the entry point for the vintage and classic cars that began to pour in after 9.00am, setting out food and facilities for our kiosk, welcoming the Berrima District old farm equipment group with their wonderful old pumps and machines, and greeting the mobile coffee man with alacrity. Then the Furies arrived in time to help the many beautifully turned out classic cars park in an orderly fashion so that they could be admired by all the visitors and other contestants.

The station was open and the Cockatoo Run train arrived with a happy load of passengers to join in the fun. The Loop Train to Moss Vale was very popular with around 70 passengers enjoying the trip across the Highlands. The Railway Common was thronged with people and the car contestant area was at capacity. The Fettle's Shed Gallery had an interesting display of local art and the Village markets at the School of Arts provided another attraction for the visitors to enjoy. Shops and cafes, including the Bowlo and the Pub, did great business.

So all the hard work by the Committee and volunteers paid off and generated funds to enable our not for profit railway group to continue to host tourist trains and look after the railway precinct. A terrific effort from the tired but satisfied band of workers. Our thanks to the local Bushfire Brigade and to our district Police who put some classic pursuit cars of the 70's on show as well as the latest turbo charged versions. This was of great interest to all and something we will try to do again.

The winners of the various car categories are:-



American – 1948 Buick Convertible – **Anthony Huckle** from Catherine Fields.

Australian – 1959 Holden Special – **George Schembri** from Girraween.

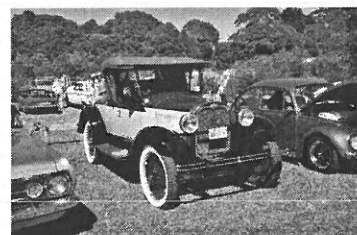
British – 1965 Lotus Cortina – **Geoff Bayliss** from Macarthur District.

European – 1966 Volvo P1800 – **Dana Jennings** from Cronulla.

Original & Unrestored – 1970 Valiant Pacer – **Jack Albronda** from St Clair.

Commercial – 1948 Ford Pickup – **David Peisley** from Koonawarra.

Best in Show – 1927 Chev. Tourer – **Ray Hatcher** from Avoca.



So the weather smiled on us, the autumn colours glowed, car contestants and "show and shiners" arrived in numbers to enjoy our pretty village, and a well patronised tourist train to boot. A truly good day. It fulfilled one of our core aims which is to promote tourism in the Highlands. Hopefully many of the visitors will return again to enjoy the area. Like all outdoor events in the highlands good weather is the absolute bottom line for success. Here is hoping that next year's event is as good. Well done to all.

Steve Carey, President

House for Lease

ROBERTSON 4/5 Bedroom home, triple garage, woodfire, gas heating, in ground pool, town water, large studio area, plus covered entertainment area \$450 per week

ROBERTSON 3 Bedroom house, fenced yard, gas heating, 2 bathrooms \$385 per week

To Let

Kangaloon - 3 bedroom, garage, rural \$380 per week



R J MACKEY Real Estate

Robertson Phone: 4885 1329
Email: rjmackeyre@bigpond.com

TRISH EMMERICK

REMEDIAL THERAPY

Remedial Massage, Reflexology, Reiki, Crystal Massage, Hot Stone Therapy, Flower Essences

Appointments in Robertson ph: 0415 673 955

Health fund rebates: Pension, student & children's rates.

ROBERTSON DOCTOR

is getting bigger!.....but can we make you better?

Since our opening in November 2009 the Robertson Doctor has continued to increase its patient base as well as the services we offer to the community. In November 2011 we won not one but two grants to the value of \$400,000. These grants were from the federal government's Primary Care Infrastructure Scheme and the University of Wollongong's Graduate School of Medicine's phase three student Infrastructure scheme.

Now finally in May 2013 we have reached a point where DA has been approved and we are set to commence works in June. We expect the building works to last up to nine weeks and the new wing should be operational by mid August. The extensions will include three new consulting rooms, a purpose built treatment room, and conference room. This will allow us to engage a nurse who will have his/her own room to provide such services as childhood and adult immunisation clinics, well women's health checks, dressing care, health assessments and much more. The extra consult rooms will allow us to offer a greater selection of times for dietitian, psychologist or other allied health services as well as more doctors. The Robertson Doctor has always had a keen interest in education and the new rooms will also allow us to participate more fully in registrar and Graduate School of Medicine training programs.

So what does this mean for Robertson? Well a better and more comprehensive medical service as well as providing a key piece of community infrastructure to allow the town to grow. We'd like to invite the Robbo community to drop in to have a look at the plans which will be on display and give us your comments as to what you'd like to see in a primary care service for our village. We invite you to think deeply and imaginatively about what health and wellbeing means to you and pass on your thoughts to us. One of the things we are happy to have preserved in the construction process are the empty spaces in the surgery. We'll still have our wonderful gallery space at reception as well as the shed space out the back. What things would you like to see happen in these spaces?

Ultimately it's not about the bricks and mortar and fancy equipment, it's about people, caring for people. Even though the Robertson Doctor is getting bigger, but we are all about making you better. We'd like to be an important part in helping the community live a happier healthier life. When you're sick, we want to make you better, when you're well, we still want to make you better. Got any ideas? Drop in and share them with us.

Pi Wei Lim
Practice Manager

Robertson Electrical Services
ROBERT HANDLEY
mobile: 0419 243 520

'Serving Robertson & District since 1999
lic No. 110210C

* Underground power * Smoke Alarms * Stoves
* Safety switches * Hot water * Emergency work

Robertson Bowling Club

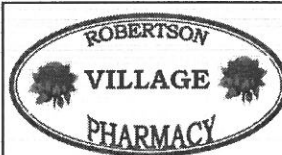
When you begin talking about \$10,000 Keno winners, a fantastic Sunday kids movie afternoon followed by one of the best Asian food banquets it's hard to believe that the place to be is Robertson Bowling Club.

The lucky \$10,000 winner was a club member, who wishes to remain anonymous, played a 10-game managing to select nine numbers for a more than healthy reward earlier this month. He may elect to celebrate his good fortune at this month's all-you-can-eat banquet on Sunday, May 26 when chef Theeradet Boonrod and his experienced staff will treat you to some of the best mouth watering delicacies you will ever taste. For just \$20 adults and \$10 children (under 12) you will be able to sample a huge range of Asian cuisine that will have you coming back to the Robertson Bowling Club for more. Since he took over the reigns as the club's chef Tee has become the talk of the town and once you have tasted his cooking you will understand why.

The banquet has been timed to follow immediately after the screening of the club's second Sunday kids movie afternoon at 4pm with entry being a gold coin donation which goes directly to the Robertson Primary School. At the inaugural kids movie day in April more than 120 youngsters packed the auditorium and organisers have gone one step further this time around giving members of the school's student representative council the chance to select their own movie. Throw in the freshly cooked pop corn and the popular slushie machine this is one day when mums and dads can enjoy some time on their own while the kids are being entertained. So remember the date, Sunday, May 26, jot it down in your diary.

Robertson Bowling Club has gone to great lengths to make young children welcome for not only they may be potential lawn bowlers but they hold the club's future in their hands. Club president Eric Pull said high on the club's agenda is the goal of making the club a friendly and happy environment where members can bring their families and enjoy the comforts of the club. An initiative started in the last term of 2012 when lawn bowls become part of the school's sports curriculum proved so successful it will be on the club's agenda again this year.

Naturally the club has a solid weekly bowls schedule starting with indoor bowls each Monday at 11am, social (mufti bowls) every Wednesday at 1pm and Sunday mornings at 10am. Throw in tombola evenings each Thursday at 8pm (with the jackpot now in excess of \$4500) and Sunday at 6.30pm along with the ever popular Friday trivia nights you can easily see why Robertson Bowling Club is definitely the place to be.



Medication Reviews,
INR Monitoring,
Blood Pressure & Diabetes Check,
Webster Packs,
Local Home Delivery

Nick Knowles, Proprietor

Shop 2, 101-103 Hoddle St, Robertson
Ph: 48852936

Email. robvpharm@gmail.com

Caring for the Community

COMMUNITY NOTICES

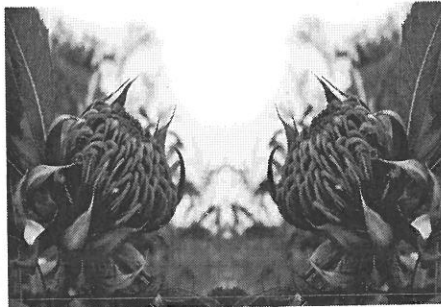
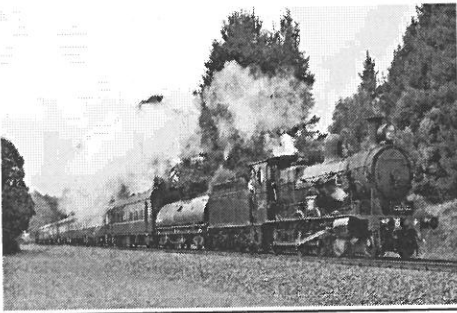
COMING EVENTS AT THE STATION

Please note the following websites for updated train information:
www.heritageexpress.com.au or www.3801limited.com.au or
www.robertsonrailway.com.au

"Cockatoo Run" loop train visits the Station on 9 & 26 May, 5 & 9 June and 14 July. Tickets can be purchased at the Railway Station for the "Loop" run from Robertson Railway Station to Moss Vale (return) before returning in the afternoon to Sydney. On some Sundays, and occasionally on Thursdays, the "Cockatoo Run" brings tourists to the "Illawarra Fly" in a tourist package which includes a bus which transports them between the "Illawarra Fly" and the Station. For updated details of trains running and times you need to consult the website - www.3801limited.com.au.

The Robertson Heritage Railway Station is a voluntary community initiative liaising with 3801 Limited, a Sydney heritage train firm also manned by volunteers

Saturday, 27 July 2013 - Steam train visit - see info@heritageexpress.com.au.
Saturday, 28 September 2013 - Steam Day with a visit from a heritage steam-hauled locomotive and other interests on the day.
Saturday/Sunday, 12/13 October 2013 - Waratah Open Garden.



We Want the NBN in Robertson Stephen Jones MP

Robertson will be missed out and therefore disadvantaged when compared to other parts of the Southern Highlands.

We say the NBN is necessary to:

Enable our business to take advantage of the high speed broadband opportunities

Provide our job seekers with the ability to use the Internet to search for jobs

Provide our students with the necessary tools to advance their education

To sign the PETITION go to:

http://www.stephenjones.org.au/we_want_the_nbn

BOOKS, BOOKS, BOOKS

Books from \$1. Over 4,000 books always in stock, fiction, fact; indeed.....



...books on every subject under the sun!

At Robertson Recollections

26 Hoddle St, Robertson 10.00-5.00 (Closed Wed.)

Homage to Dave Brubeck **BRUBECK**



Dave Brubeck, one of the world's great improvisational jazz pianists, died in 2012 at 91. **Tony Williams** was a friend of Brubeck and will present this homage. Tony has dug up some great footage of the Dave Brubeck Quartet in performance. He will also screen excerpts from Brubeck's classical work *To Hope, A Celebration* for orchestra and jazz quartet. This Moscow performance has insights into rehearsals where Russian musicians confront jazz for the first time.

Sunday 18th August at 2pm

Café opens at 1.30pm. Tea & coffee available.

Adults \$10 children \$5
(CTC fundraiser).

Bookings recommended.

CTC@Robertson

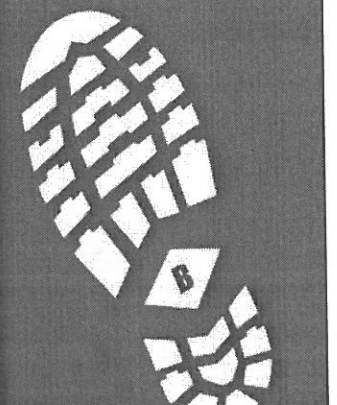
58 - 60 Hoddle Street Robertson
4885 2665

www.robertsonctc.org.au/cafe.htm
info@robertsonctc.org.au

ben papandrea CONCRETOR

ABN31 856718518
LIC137005C-211461C
po box 3007 robertson 2577
papandrea@idx.com.au

0422 849 111
4885 2379



Thanks For Your Support!



It feels hard to believe but it's now been a year since Robertson Village Pharmacy moved to its current location. We have missed the close proximity to the delicious offerings of Café Pirouette, the entertainment from KA and being a sausage taster for Robertson Butchery ("Your One Stop Butcher Shop" - I love that). However, the move has really been such a positive move for the store and we thank you all for the fantastic support that you have given us.

Moving to a bigger space has enabled us to provide a better shopping experience for our customers with room to actually move around! Of course it has also meant that we have been able to provide a much broader range of products. Since the move we have expanded into giftware and sunglasses as well as broadened our range of vitamins, weight loss products, sports aids, wound care and skin products. We have also been able to provide a community notice board and space for advertising other local services and information.

Through the dispensary we have been able to bolster existing services such as blood pressure monitoring, Easy Script (keeping scripts on file) and Webster Packing as well as providing additional services such as blood glucose testing, INR monitoring, and Medication Reviews.

The greater success of the business has also allowed us to continue to support local groups and organisations such as the Junior and Senior Spuddies, the Robertson-Burrawang Soccer Club, the Robertson Garden Club, the Robertson Hockey Club and Triple Care Farm.

Once again, a big thank you to all of our fantastic customers. Without your continued support there would be no Robertson Village Pharmacy.

Nick Knowles
Pharmacist and Owner - Robertson Village Pharmacy

Anglican

St John's Robertson

8.00am Traditional Services
1st Sunday - Communion
4th Sunday - Morning Prayer

9.30am Family Service/Sunday School
Every Sunday

St David's Burrawang

5.00pm - 3rd Sunday

Roman Catholic

Burrawang

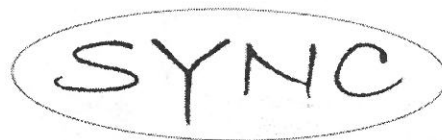
1st, 3rd, 5th Sundays - 8.00am
2nd & 4th Sundays - 5.00pm

Robertson Uniting Church

3rd Sunday
Family, Friendship & Food @ 5pm

3rd Wednesday - 10am-12noon
Coffee, Cake & Conversation Café

Contact - Jean Tobler - 48851490



Sunday Youth Night Church

1st Sunday of the Month

It's for everyone around high school age, starting at 6:30pm. We finish around 7:30 and then have some food till about 8pm.

Come and check it out - we are in the new building on Meryla Street Robertson, behind the old church building.

More info?

Call Jon Bracht on 4885 1313

Contribution Guidelines

Community Service Announcements, articles and diary submissions are free of charge. All items must be submitted by deadline dates and may be modified at the editors discretion. To avoid extensive editing please limit announcements to 25 words, and articles to a maximum 300 words. It is preferable that submissions be typed or emailed. Thank you.

Advertising

A single insertion is \$35. (Discount of \$5 for members of Robertson Chamber of Commerce) Each insertion is limited to a maximum 85 x 55 mm. Advertisers are responsible for meeting submission deadlines. Any copy received after the deadline is unlikely to be included. All advertising is payable in advance. All advertisements to Dorothy Baker at the OPSGallery now at the Robertson Cheese Factory ph/fax 4885 2400 or PO Box 3005 Robertson 2577. Thank you for your support.

Deadline

The next issue will be distributed in the first weeks of August. All advertising & submissions must be received by 15th July 2013. Forward correspondence to: Robertson Newsletter, 64 Hoddle St, Robertson 2577, or Email: bjlee@dodo.com.au. (Submissions are best supplied by email or on disk. Avoid formatting text as much as possible. Hard copy must be typed) Enquiries - 4885 1210

Disclaimer

This newsletter is an independent publication under the auspices of The Robertson Chamber of Commerce. The ideas presented are not necessarily those of the editors nor of the Chamber. The statement and opinions expressed in this publication are made in good faith, and the editors, volunteers and contributors do not take any responsibility for those statements and opinions, any inferences that may be drawn from them, or actions or charges which may result from them. The Editor reserves the right not to print any item that is defamatory to any person or organisation, or that is anonymously sent, and to edit any contributions as required.

Editor : Barry Lee