



JG

# Robertson News

October 2012

Edition 91

[www.robertson.nsw.au](http://www.robertson.nsw.au)

## Triple Care Farm wins Mental Health Services Award!

Congratulations to the hardworking team at Mission Australia's Triple Care Farm on receiving a Silver Achievement Award at the Mental Health Services Conference in Cairns.

Triple Care Farm won the award in Excellence in Clinical and Non-Clinical Service Delivery category. It was given in recognition of its ongoing provision of a quality residential rehabilitation program for young people with substance abuse issues and mental illness.

Professor Allan Fels AO, who is Chair of the National Mental Health Commission, presented Triple Care Farm's Supervising Psychologist Nichole Sullivan with the award at the Cairns Convention Centre.

The Achievement Awards are given out every year by the Mental Health Services Conference of Australia and New Zealand to recognise and encourage best practice, excellence and innovation in mental health service delivery.

It's not the first time Triple Care Farm has been recognised for its holistic support. In 2009 it received the prestigious Excellence in Services for Young People at the National Drug and Alcohol Awards, followed by a silver award at the 2010 Mental Health Services Conference. (Note - The MHS has not handed out a Gold award in this category in 2010 or 2012)



Triple Care Farm is a residential rehabilitation program for young people aged 16 - 24 years. Situated at Knights Hill over an expanse of 110 acres, the program aims to give young people struggling with co-morbid substance addiction and mental illness, the space and opportunity to create a life worth living. Triple Care Farm takes a holistic approach to recovery, offering its participating young people, or "students," opportunities to make real and lasting change through psychological intervention, case management support, vocation and education training and sport and recreation. Through such an approach, Triple Care Farm aims to provide individualised care across all areas of personal development. Underpinning this holistic care is the philosophy of personal responsibility; students are expected to be active participants in the program and are invited to direct their journey, constantly reflecting upon and discussing their goals as they progress towards recovery.

The program invites approximately 100 clients from across Australia to participate each year, with referrals being accepted from the young person themselves, their families, mental health workers, juvenile justice, probation and parole, as well as many other agencies. Triple Care Farm is a non-government organisation with primary funding through Mission Australia and the Sir David Martin Foundation. Other major funding and sources include the Australian Government, donations from individuals, other community organisations and corporate bodies. "Students" at Triple Care Farm are assisted in their journey to recovery by 22.8 full time equivalent staff, from varying backgrounds and expertise, including; psychologists, social workers, vocational and educational trainers, musicians, youth and welfare workers, and many others.



# Robertson Chamber of Commerce

AGM Monday Oct 22<sup>nd</sup> at CTC 5-30pm

## New members very welcome.

### We achieve a lot

- Support of local business and encourages all to **BUY LOCAL**.
- Issue a Free bi-monthly **Robertson Newsletter** - with RCoC member discount on adverts.
- Free annual **Robertson and District Calendar** with local information - with RCoC members discount on adverts
- Sponsor **Robertson Open Gardens** in springtime
- Robertson **'Green Heart of the Highlands'** brochure production & distribution far and wide, encouraging visitors and includes a village map.
- Assist and support the **'BIG SPUD'** park renovations.
- Maintains **signage** at the gateway to the village east and west
- Lobby WSC council and RTA
- Sponsor the **FETTLERS SHED Art Prize** + award donation.
- Representing, supporting all efforts to bring visitors and new business to our village
- Sponsors of **Robertson Music Society**
- Supports **www.Robertson.Nsw.au** the village website
- Member of **Tourism Southern Highlands & Southern Highland Business Chamber**
- RCoC members receive updates on **Heritage Trains** arriving & other local events.
- RCoC members receive business information & opportunities from the State & Fed. Government.

**Your RCoC membership** gives you advertising opportunities & greater lobbying power plus allows you to have your say when helping the village to progress.

Many Thanks, Dorothy Baker President  
e-mail : [dorothybaker@southernphone.com.au](mailto:dorothybaker@southernphone.com.au)

## 'Call to Arms' Fettlers Heritage Art Prize 2013

To ensure the continuation of this local annual art competition, it is necessary to call on interested parties to form a small committee, for the express purpose of organising, managing and promoting the 2013 event.

It is envisioned that 3-4 people would be appropriate to spread the load of the tasks required (see more detail on [www.robertsonrailway.com.au](http://www.robertsonrailway.com.au)) This number will ensure the experience is not too overwhelming. Previous experience not necessary, as the formula is already there, as well as databases and email contacts, along with backup advice from previous organisers.


Enthusiasm and a desire to make the event successful is needed to keep it growing, as it is an important vehicle to help promote the continued presence of the RHRSI & Railway in Robertson Village, as well as a great forum for local art.

Please Call Penny 0408610714, 48615017 to discuss your interest or email [dog3gone@bigpond.com](mailto:dog3gone@bigpond.com) for more details to be sent

## Robertson School of Arts Markets

2nd Sunday each Month  
Plenty of stalls available  
\$25 inside  
\$15 outside

Contact Edna Casey—4885 1216

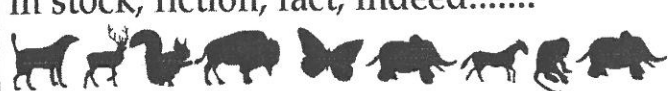
 \$65.00 Robertson Chamber of Commerce Membership Subscription 2012-13  
Business Name: \_\_\_\_\_  
Contact Name: \_\_\_\_\_  
Address: \_\_\_\_\_  
Phone: \_\_\_\_\_  
E-mail: \_\_\_\_\_

Cheques payable to Robertson Chamber of Commerce  
Direct debit to BSB 012 547 Acc: 493532055 Ref: your business name + Subs  
PO BOX 3005 Robertson 2577

 **Southern Highlands Funerals**  
**Colin and Laurelle Boland**  
415 Argyle Street, Moss Vale  
Phone: 4869 2888  
Mobile: 0414 986 988  
Email: [info@southernhighlandsfunerals.com.au](mailto:info@southernhighlandsfunerals.com.au)  
[www.southernhighlandsfunerals.com.au](http://www.southernhighlandsfunerals.com.au)

**BOOKS, BOOKS, BOOKS**

Books from \$1. Over 4,000 books always in stock, fiction, fact; indeed.....



...books on every subject under the sun!  
**At Robertson Recollections**  
26 Hoddle St, Robertson 10.00-5.00 (Closed Wed.)

## CTC CINEMA TALKS 2012

A capacity crowd filled the Robertson Community Technology Centre on Sunday 26th August for what was an extremely entertaining afternoon of cinema and storytelling, accompanied by wine, cheese and good coffee.

"Nureyev" was the first of the CTC Cinema Talks for 2012. The event was a winning combination - a stunning documentary about the life and work of arguably the greatest dancer of all time, with an introductory talk by Nureyev's personal assistant Blue Robinson. Blue's anecdotes about his time with Nureyev provided a candid and "behind the scenes" insight into the life of one of the greatest artists of the 20th Century.

As CTC cinema goer Judy Benjamin said, "The wealth of interesting and talented people in our community never fails to surprise me. Blue's stories were very engaging- the feeling in the entire room was amazing. By the end of the afternoon I felt as though I knew Nureyev personally."

Blue Robinson, who lives and works at Wild Wood Gallery at Fitzroy Falls, has also written about his experiences in his book, "A Year with Rudolf Nureyev" which is available from Wild Wood Gallery or the website [www.ayearwithrudolfnureyev.com](http://www.ayearwithrudolfnureyev.com).

Patricia Foy's documentary "Nureyev" included interviews with many of the seminal identities in his life, some rare early footage, as well as several excerpts from his most famous works. A performance of "Giselle" with Dame Margot Fontaine was particularly stunning as was some of his more experimental dancing.

Organised by award winning film director Tony Williams and his wife Anna, the CTC Cinema series has been a terrific addition to the cultural life of the Highlands. Says Williams, "Our aim in hosting the cinema series is not just to show interesting films, but to enhance the experience by inviting industry professionals to speak at our screenings. The talks provide added insight, and hopefully increase the appreciation of film. The series appears to be extremely popular as the audience continues to grow."

The second film in the Cinema Talk Series was on Sunday 23rd September. Tony Williams spoke about the work of Russian director Mikhail Kalatozov and screened his masterpiece "The Cranes are Flying", which won the Palme d'Or at the 1958 Cannes film festival.

The final event in the series will be on Sunday 21st October with Andrew Ford, ABC Radio National host of The Music Show. Andrew will introduce the inspirational documentary "The Promise of Music", a film that explores Venezuela's visionary music education system and its miraculous youth orchestra, conducted by the acclaimed Gustavo Dudamel.

Considering it was standing room only at the Nureyev cinema talk, bookings are highly recommended. Contact the CTC on 4885 2665 or [info@robertsonctc.org.au](mailto:info@robertsonctc.org.au).

By Celeste Coucke



### KJM Glass Pty Ltd

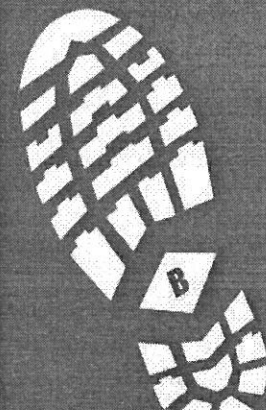
All Glass & Mirror requirements  
Shower screens & Screen doors & windows

Call Jeff and Kellie Mant  
Mb 0400 462666 Fax:4885 2460  
e-mail [kjmglass@bigpond.com](mailto:kjmglass@bigpond.com)

### ben papandrea CONCRETOR

ABN31 856718 518  
LIC137005C-211461C  
po box 3007 robertson 2577  
[papandrea@idx.com.au](mailto:papandrea@idx.com.au)

0422 849 111  
4885 2379



# The LIGHT HORSE GALLERY

## Spirit of Place,

a beautifully crafted exhibition of paintings by local artist

**Jacqueline Johnston.**

Friday Sept 21 – Sunday Oct 7

Jacqui has always been interested in the masks that people and places wear, and how just scratching at the surface of what appears at first to be difference, is really a call to look more closely at the interconnectedness of humanity and the worlds in which we dwell. Jacqueline feels the nexus of the relationship between humanity and the natural universe is the belief that all of creation is an expression of the many names and attributes of a divine energy. This show encapsulates attempts to realise this through the mediums of paint, paper and wood. Inspired by a trip to Morocco in 2010/11; the light, the mystery and the sense of place which imbues your whole spirit when you are there, made her want to try to capture those feelings and resonances, and to put those expressions onto canvas and paper.

In creating for this show, Jacqueline especially enjoyed the vigorous physicality of working with the larger timber and board pieces. The tactility of large broad strokes that are rubbed and scrubbed and re worked, building satisfying layers to the work, often allowed new insights within the forms of the painting. Jacqueline finds the painting process is meditative, as it removes her mind from the everyday, lifting one out of one's own space and time, and undeniably forces you to acknowledge what is happening in front of you on the canvas; the here and now.



Spirit of Place  
Jacquie Johnston

## The Curious Garden

Artists Impressions of all Things Botanical

During October, the Southern Highlands of NSW bursts into colour with blossom, tulips, daffodils and all the wonders of Spring. Many of the beautiful private gardens are open to the public, as they are at their showiest best. The Highlands is also blessed with an extraordinary number of artists, many inspired by the beauty and variety of flora in the area. At the Light Horse Gallery we will be having a group exhibition of all things weird and wonderful in the plant world. On exhibition will be large vibrant oils and acrylics on canvas, delicate watercolour studies and even floral inspired jewellery. Something for everyone.

The exhibition, The Curious Garden, runs from Friday Oct 12 – Sunday Oct 28 and will coincide with the Robertson Spring Festival to be held on the weekend of October 13-14.



Green & Turquoise Tree – Janine Coddington

**ROBERTSON  
SHOW SOCIETY**

**ANNUAL GENERAL  
MEETING**

THURSDAY 4<sup>TH</sup> OCTOBER 2012

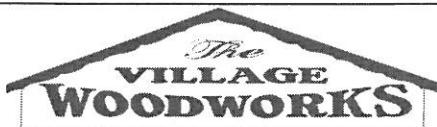
HINDMARSH PAVILION  
ROBERTSON SHOWGROUND

6.45PM

*All Welcome.....*  
Join us for  
*Supper/ Beer/ Wine tea & coffee  
provided*

[robertsonshow@bigpond.com](mailto:robertsonshow@bigpond.com)  
[www.robertsonshow.org.au](http://www.robertsonshow.org.au)

Applications for positions shall be accepted in writing or email until Wednesday 3<sup>rd</sup> October  
(or when from floor if no nominations for positions received prior)  
Addressed to the Secretary PO Box 3044 Robertson NSW 2577  
Mobile: 0411 537600



**NEW STOCK ARRIVING SOON**

- ◆ studio's
- ◆ summerhouses
- ◆ cubby houses

COMPARE THE PRICE & QUALITY!

The Village Woodworks  
02 4885 1328



**GAS BOTTLES  
for  
BBQ & MUSHROOM HEATERS  
available now.**

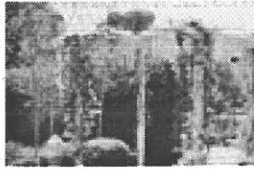
The Village Woodworks.  
02 4885 1328

# ROBERTSON SPRINGTIME OPEN GARDENS - 13TH & 14TH OCT

GARDENS OPEN 9.30 - 4.40

## ROXHAVEN 67 SOUTH ST

A half acre garden developed in retirement. You will see a number of maples, camellias as well as natives with waratahs featuring in both the front and back yards. Roses and bulbs with daffodils, tulips, hyacinth, freesias planted round the yard. There is a fully enclosed vegetable garden



## LINDEN PARK ILLAWARRA HWY

There are extensive rain forest plantings, wind breaks and hedges with magnificent views over the rolling green hills of Robertson. Colourful garden rooms with expansive lawns and winding pathways through annual and perennial beds featuring natives, proteas, leucadendrons, exotics, deciduous trees and shrubs. Other features include a rose folly, wisteria walk, walled sasanqua vegetable garden and a covered orchard/chook run.



## ANNE'S GARDEN 31 HIGH ST

A lovely young village garden of 3/4 acre. The plantings feature hedges and herbaceous borders, and shrubs including young magnolias, maples, camellias, and native plants. There is a wire enclosed vegetable garden, young citrus and a passionfruit on a trellis. Borders feature bulb plantings, and are decorated with garden sculptures and pots of flowers.



## THE WILLOWS LEMMON'S RD

The Willows is a 5 acre property with extensive established gardens. Mature trees include maples, crabapples, cherries, ginkgo and a Davidia under planted with camellias, azaleas, pieris and kalmia. The rear garden contains a Japanese style conifer island, plus a mini arboretum of rare and unusual trees. A large bonsai collection, greenhouse with orchids, tuberous begonias and streptocarpus. There will be nursery stock for sale, especially plants suitable for bonsai, and a horticulturist will be on hand to answer your questions



PLANT STALLS AT THE CTC. COMMUNITY BUS TO SOME GARDENS.

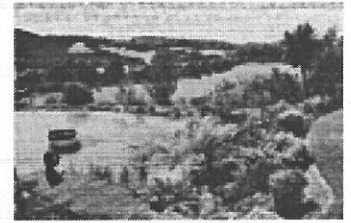
PROCEEDS FROM THE OPEN GARDENS GO TO THE ROBERTSON FIRE SERVICES, CTC AND SHOW SOCIETY

TICKETS AVAILABLE FROM THE CTC, HERITAGE RAILWAY STATION AND EACH GARDEN.

\$5.00 per garden, \$20.00 all gardens, \$15 conc. tickets valid over both days.

## THE MOORINGS

The Moorings is a 100 acre farm with a 4 acre garden surrounding a restored/ rebuilt 1870's house. The present garden is basically a foliage garden with specific areas dedicated to conifers, azaleas, camellias, and rhododendrons amidst three lawn areas. Many trees and shrubs are close clipped in a variety of shapes. A rose garden, a hydrangea garden, a vegetable garden, and a small orchard are also featured, as well as a summer house and a small "lake". Everywhere in the garden presents spectacular views of the countryside.



## HARLAM'S HOLLOW MACKEY'S LANE

Harlam's Hollow is a 5 acre property with the garden itself, occupying only half of that. Camellias, azaleas and rhododendrons mingle, with *Nyssa sylvaticas* featuring under plantings of hellebores and heucheras. The garden has an eclectic collection of plants from natives to exotics - from a Wollemi pine, waratahs, blueberry ash, native ferns and orchids to michelias, magnolias, crabapples, dogwoods, maples and bulbs.



## ACMENA HILL MACKEY'S LANE

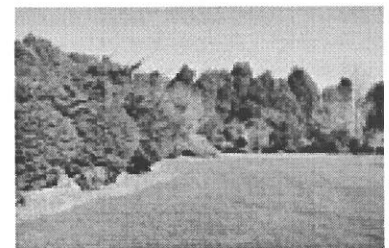
North facing with deep volcanic soil and ample water, this five acre garden has been developed over the past thirty years by the owners. With a backdrop of acmena, sassafras and wattle, the garden follows the slope.



There are views of rolling hills and ocean glimpses. Exotic plantings of flowering cherries, maples, camellias, conifers and azaleas are interspersed with very necessary wind-break hedges. There is a vegetable garden and an espaliered orchard. Colourful annuals and bulbs brighten the sheltered garden beside the house.

## MIRAMAR MACKEY'S LANE

Miramar is a large and beautiful garden on a working cattle property with wonderful views east towards the coast. A long "friendship" driveway leads from the entrance gates to the house, planted with plane trees given by family and friends to celebrate the owners' 40th wedding anniversary. The garden features a splendid collection of cool climate exotics including rhododendron camellias, pieris, magnolias and also native trees and shrubs. There is a conifer garden, a rain forest walk and a wonderful collection of orchids.



# The First of Many

The season is over for the three 'Under 6' teams of the Robertson-Burrawang Rovers Soccer Club. For most, it was their first taste of a team sport, with a coach, injuries, rules, and the need to see a game through.

This winter demanded the children play in the extremes that Robertson is renowned for ... soft sun and rain, cold wind and mist, on frosty grass and snow. The spectators seemed more aware of the conditions than the children, who could scoff at the offer of a beanie and jacket when on the bench. With 4 on the field at any one time, the 1 or 2 subs would eagerly, impatiently await their turn to be in the thick of it.

The canteen offered before and after game treats to all and continued through the day for the different games. Now the social hub of Robertson on winter Saturdays has reverted to lonely wind swept fields.

We do gather again for 'The Presentation' afternoon at The Robertson Bowling Club on the 14<sup>th</sup> October at 2.00 PM

Many thanks to the Robertson-Burrawang Rovers Soccer Club and especially the coaches, Dan Beville, Ben Quilty and Kristen Wilson, for their dedication to the training and games each week. From the warmth of our embrace, they took our children from kicking and dancing innocents to co-ordinated units with spirit and camaraderie.

Kathleen Betts



Robertson Electrical Services  
**ROBERT HANDLEY**  
mobile: 0419 243 520

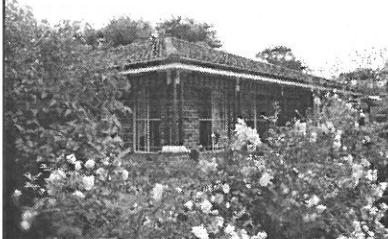
'Serving Robertson & District since 1999  
lic No. 110210C

\* Underground power \* Smoke Alarms \* Stoves  
\* Safety switches \* Hot water \* Emergency work

## For Sale

2 separate extra large 4 bedroom brick veneer homes with ensuites to main, on a 1/2 acre block, workshop, big 4 car garage + 3 storage sheds, gazebo in an established garden, short walk to school and shops.

One house was being operated as an established council approved B&B with 3 star NRMA rating. (furnished and still ready to restart.)



**R J MACKEY Real Estate**

Robertson Phone: 4885 1329  
Email: rjmackeyre@bigpond.com



# COMMUNITY NOTICES



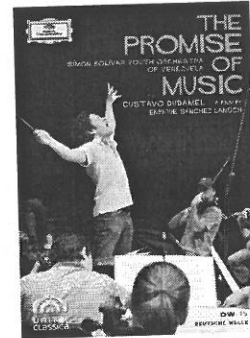
It's that time again - Mental Health Month- and here's what will be happening at the Robertson Doctor during October.

- Art Display from the residents of Triple Care Farm
  - Pamphlet display providing details of local available resources
  - Thurs 4th Oct 6.00pm to 7.30pm Introduction to Yoga  
Presenter : Pi Wei Lim
  - Mon 15th Oct 6.30pm to 7.30pm Meditation- "What is it & how can I use it"  
Presenter: Dr Fiona Brown
  - Wed 17th Oct 6.30pm to 8.00pm Parenting Survival Skills Workshop  
Presenter: Linda Burgess
  - Tue 23rd Oct 6.00pm to 7.00pm Staying Well Mentally  
Presenter: Dr James Botham
  - Mon 29th Oct 6.30pm to 7.30pm My health, my future, my choice  
Presenter; Dr Fiona Brown
- Workshop to discuss End of life Care Directives  
Work books for this workshop are \$15.00

If you are interested in attending any of our events please contact the practice on 4885 2569.

## CTC Cinema Talk Series 2012 The Promise of Music

Introduced by Andrew Ford



Host of the ABC Music Show, composer and author, **Andrew Ford** will introduce the inspirational documentary *The Promise of Music*. This film features Venezuela's extraordinary and visionary music education system and its miraculous youth orchestra conducted by the acclaimed Gustavo Dudamel. We hear the stories of the young musicians and watch them prepare for and perform at the 2007 Bonn Beethoven Festival where the concert was hailed as *sensational ... a standing ovation after every piece* (Süddeutsche Zeitung). Film duration 91 mins.

**Sun 21<sup>st</sup> October at 3pm**  
Wine, cheese and coffee included.  
Adults \$20 children \$10  
(CTC fundraiser).  
Bookings recommended.

**CTC@Robertson**

58 - 60 Hoddle Street Robertson  
4885 2665

[http://www.robertsonctc.org.au/  
cafes.htm](http://www.robertsonctc.org.au/cafes.htm)

[info@robertsonctc.org.au](mailto:info@robertsonctc.org.au)

**Saturday October 13**  
Steam Locomotives 3265 & 3642  
Station Waratah Gardens  
Flowers & plants for sale  
Miniature Steam Train Rides  
Old Time Working Farm Machinery  
Food, Drink, Coffee  
Icecream, Stalls  
Also open Sunday 14th  
[www.robertsonrailways.com.au](http://www.robertsonrailways.com.au)  
Neil or Marion 4885 2325

### Thank you Frank Mason

On behalf of Frank I would like to thank all the many people who helped with every aspect of his funeral in so many different ways.

If it wasn't for your help I couldn't have given him the funeral he asked for.

Your kind thoughts and concern are much appreciated at this very difficult time

Thank you all

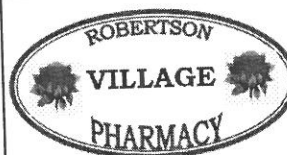
Lyn

ADVERTISEMENT

**Gareth Ward MP**  
Member for Kiama  
*Working for Robertson*

Get in touch with Gareth:  
Phone 4232 1082 | Fax 4232 3577  
Email [kiama@parliament.nsw.gov.au](mailto:kiama@parliament.nsw.gov.au)

Authorised by Gareth Ward MP, 125 Terralong Street, Kiama NSW 2533.



**Nick Knowles, Proprietor**

Shop 2, 101-103 Hoddle St, Robertson  
Ph: 48852936

Email. [robvpharm@gmail.com](mailto:robvpharm@gmail.com)

*Caring for the Community*

# What to do with Allergies

It's getting to that time of year again and already we are seeing a large number of people suffering with allergy. It is usually caused by inhaling pollens that are present in the air during certain times of the year. However, some people have symptoms of allergic rhinitis all year round, caused by inhaling allergens such as animal dander, mould spores and house dust mites.

Symptoms of allergy can include: sneezing, running nose, sinus congestion, itchy nose, itchy/watery eyes and feeling run-down. It can often be worse in the mornings and on windy days (when airborne pollen levels are highest).

To help manage your allergy, try and identify the things that may be triggering your symptoms and then aim to reduce your exposure to them. It's not always easy but doing things such as staying indoors on windy days, removing suspect house and garden plants, cleaning your house regularly to remove mould and dust, and keeping animals outdoors may help.

The important thing for you to remember is that you don't have to suffer! There are plenty of good treatment options available to give you some relief and help prevent the hay fever symptoms. These include:

## Antihistamines

They aim to counter the body's reaction to the allergen and help to relieve itching, sneezing, running nose and eye symptoms.

Are available as tablets, syrups, nasal sprays and eye drops.

## Corticosteroid nose sprays

The lining of the nose and sinuses can often get very inflamed with allergic rhinitis. These nasal sprays are effective in reducing this inflammation and even in preventing it in the first place.

Regular daily use is often needed to get the best results.

## Other treatments

Decongestants (tablet form or nasal spray) can help to dry up the nose.

Saline nasal sprays and rinses can help clear mucus from the nose and sinuses.

Lubricant eye drops (artificial tears) may relieve mild eye symptoms.

Ask a pharmacist or doctor for advice about the best treatment for you.

By Nick Knowles

Pharmacist, Robertson Village Pharmacy

## Anglican

### St John's Robertson

8.00am Traditional Services

1st Sunday- Communion

4th Sunday- Morning Prayer

9.30am Family Service/Sunday School  
Every Sunday

### St David's Burrawang

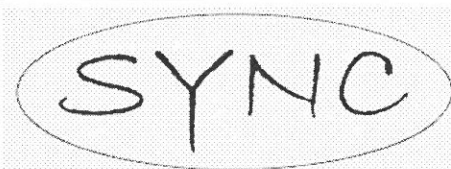
5.00pm - 3rd Sunday

## Roman Catholic

### Burrawang

1st, 3rd, 5th Sundays – 8.00am

2nd & 4th Sundays – 5.00pm



## Sunday Youth Night Church

1st Sunday of the Month

It's for everyone around high school age, starting at 6:30pm. We finish around 7:30 and then have some food till about 8pm.

Come and check it out – we are in the new building on Meryla Street Robertson, behind the old church building.

More info?

Call Jon Bracht on 4886-4326

### Contribution Guidelines

Community Service Announcements, articles and diary submissions are free of charge. All items must be submitted by deadline dates and may be modified at the editors discretion. To avoid extensive editing please limit announcements to 25 words, and articles to a maximum 300 words. It is preferable that submissions be typed or emailed. Thank you.

### Advertising

A single insertion is \$35. (Discount of \$5 for members of Robertson Chamber of Commerce) Each insertion is limited to a maximum 85 x 55 mm. Advertisers are responsible for meeting submission deadlines. Any copy received after the deadline is unlikely to be included. All advertising is payable in advance. All advertisements to Dorothy Baker at the OPSGallery now at the Robertson Cheese Factory ph/fax 4885 2400 or POBox 3005 Robertson 2577. Thank you for your support.

### Deadline

The next issue will be distributed in the first weeks of **December**. All advertising & submissions must be received by **15th November 2012**. Forward correspondence to: **Robertson Newsletter, 64 Hoddle St, Robertson 2577**, or **Email: bjlee@dodo.com.au**. (Submissions are best supplied by email or on disk. Avoid formatting text as much as possible. Hard copy must be typed) Enquiries - 4885 1210

### Disclaimer

This newsletter is an independent publication under the auspices of The Robertson Chamber of Commerce. The ideas presented are not necessarily those of the editors nor of the Chamber. The statement and opinions expressed in this publication are made in good faith, and the editors, volunteers and contributors do not take any responsibility for those statements and opinions, any inferences that may be drawn from them, or actions or charges which may result from them. The Editor reserves the right not to print any item that is defamatory to any person or organisation, or that is anonymously sent, and to edit any contributions as required.

Editor : Barry Lee