

JG

# Robertson News

December 2013

[www.robertson.nsw.au](http://www.robertson.nsw.au)

Edition 98

## Diggers MMC comes to Robertson

Robertson has long been familiar with the sound of motorbikes making their way through the village on weekends. Well, one motorbike club has now decided to make Robertson home, with the Diggers Motorcycle Club renovating and taking up residence in the old Scout Hall behind the Robertson CTC.

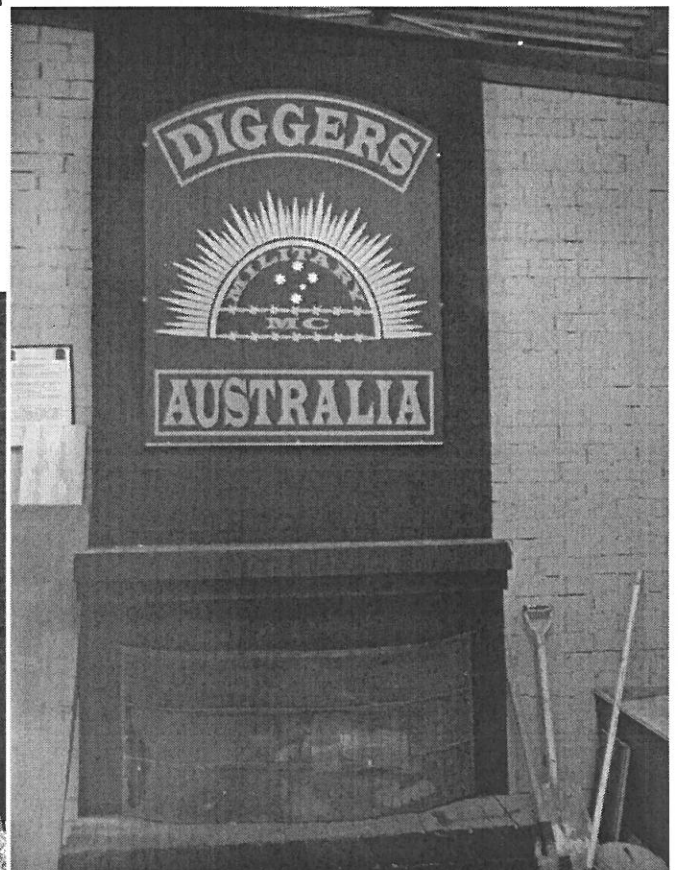
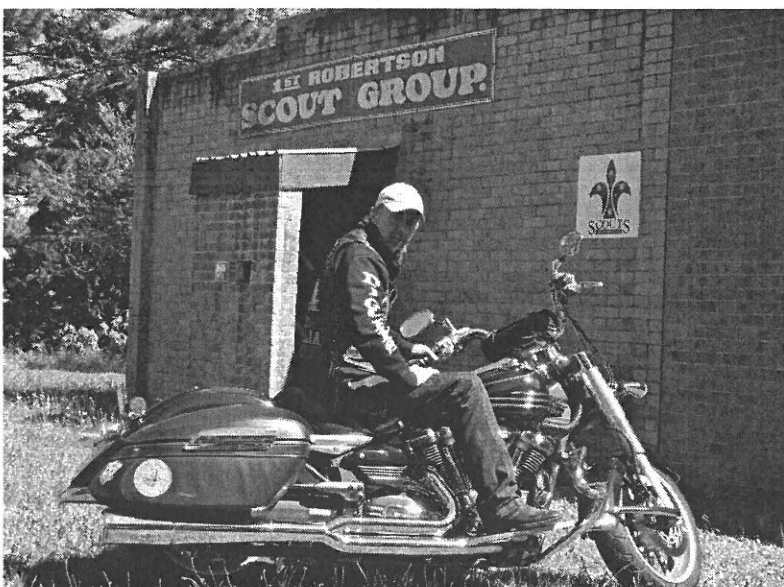
Actually, the full name of the club is the Diggers Military Motorcycle Club, so residents do not need to be alarmed when they see crossed automatic weapons featured in some of their insignia. It is just a reminder that these men have served in the Australian Defence Force—Army, Navy, Air Force as well as all Commonwealth Forces. The club was begun in 2008 and involves regular meets encompassing the spirit of riding motorcycles whilst having the comradeship that develops from military service. Many of the members have served in Somalia, Namibia, Iraq and Afghanistan.

The club is actively involved in supporting Legacy on the basis that “we support those who support us” and also themselves support returned service personnel. They are keen to become involved and support the local community, with the Anzac Day Commemorations of special interest.

The club colours, that already have pride of place above the fireplace in the old hall, feature symbols of military service together with the Southern Cross and are in green and gold. So when you see motorbikes in the village look for the Diggers Colours to distinguish them from the other clubs that are just passing through.

You can find out more about the club, its history and its aims on their website:

[www.diggersmmc.com.au](http://www.diggersmmc.com.au)



## From the Editor

Wingecarribee Council have advised the Robertson Chamber of Commerce that the "Our Village Our Future" programme that has already been piloted in Balmoral and Wingello will be extended to Robertson village in 2014. The programme seeks to involve the whole community in developing an action plan to achieve the community's vision for the village. It is expected that the programme will begin with a survey that will go out to all residents in February 2014 and will be followed by workshops facilitated by Council.

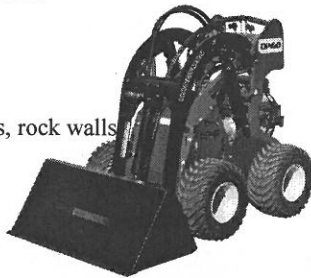
More information and the plans that were developed for Balmoral and Wingello can be found on Council's website at [www.wsc.nsw.gov.au/services/community/our-village-our-future](http://www.wsc.nsw.gov.au/services/community/our-village-our-future).

Two more editions of the Newsletter to go before the editor retires. We are still keen to hear from anyone who is interested in keeping it going by being prepared to source articles and ads from the local community or be responsible for editing and arranging the printing of the newsletter. Speak with Dorothy at the Greenheart Gallery in the Old Cheese Factory if you are interested.

## Kangaroo Landscaping

- \*trench digging, soil levelling
- \*post hole digging 100, 150, 200 mm
- \*Driveway repairs
- \*Tree / hedge planting
- \*moving mulch, soil, rocks
- \*Landscape work; retaining walls, rock walls

Phone: **0439 456 356**



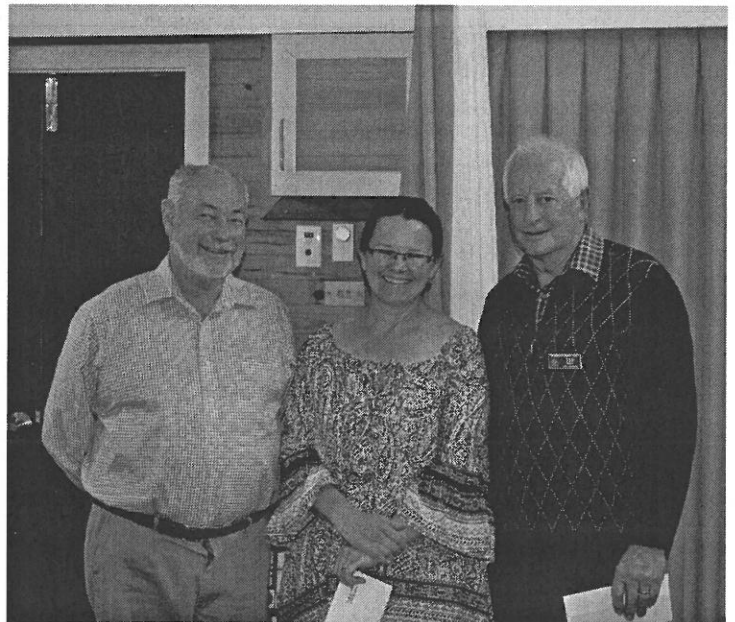
## ROBERTSON OPEN GARDENS

It was a wonderful weekend of perfect weather on 12th & 13th October for the Robertson Open Gardens, and what a great success. Eight residents opened their gardens to the public and we thank each of them for their efforts in preparing their gardens. There were over 500 visitors to the gardens and hopefully this overflowed into the businesses in Robertson. Visitors were very impressed by the gardens and the Garden Club monster plant stall was a sell out.

The committee wishes to thank everyone involved in this community event. Thank you to the Robertson businesses who purchased advertising space on the tickets, allowing the advertising fliers to be printed well before the event. As with any community event, success relies on the business community and the local residents. Thank you to Amanda Louth for designing the graphic work on the flier and tickets. Thank you to the volunteers from the CTC and the Show Society who manned the gardens, the Garden Club volunteers who ran the plant stall, and to those who worked tirelessly behind the scenes to make the weekend such a success.

The money raised from the Open Gardens is donated each year to some of our village groups. This year it goes to the CTC, the Show Society and in beautifying Robertson. At the Garden Club meeting on November 4th, Phillip Owen, Open Gardens Coordinator presented Monica Engel from the CTC and Ted Ross from the Show Society \$3000 each. Phillip has now moved to Canberra and we will miss his coordination skills in the coming year. It is also planned to donate money to the Salvation Army NSW fire relief appeal.

Planning for next years open gardens has already commenced and we invite any gardeners willing to consider opening their gardens next year to contact the Robertson Garden Club 4885 2249 and speak to Marion Tyree.



ADVERTISEMENT



**Gareth Ward MP**  
Member for Kiama

*Working for Robertson*

Get in touch with Gareth:  
Phone 4232 1082 | Fax 4232 3577  
Email [kiama@parliament.nsw.gov.au](mailto:kiama@parliament.nsw.gov.au)  
Authorised by Gareth Ward MP, 125 Terralong Street, Kiama NSW 2533.



## KJM Glass Pty Ltd

All Glass & Mirror requirements  
Shower screens & Screen doors & windows

Call Jeff and Kellie Mant  
Mb 0400 462666 Fax:4885 2460  
e-mail [kjmglass@bigpond.com](mailto:kjmglass@bigpond.com)



## Martine Chops for Charity

At the end of November Martine Rolff of The Old Road and valued staff member at Robertson Village Pharmacy cut off her famous locks for charity. With her flowing golden hair the envy of many an admirer, Martine had no qualms about donating the majority of it to go towards wigs for sufferers of cancer. Martine says she was keen for a change anyway and saw it as a great opportunity to do something positive for those going through a tough time.

In addition to donating her hair, money has also been raised to donate directly to the Southern Highlands branch of Can Assist. One of the key functions of Can Assist is to provide financial support to local people with cancer to ease the burden of the associated costs.

The whole event caused quite a buzz in town which took Martine a bit by surprise. "I just thought I'd cut my hair, donate it for a wig or two and that would be that", Martine said. "I never thought people would be so interested and supportive. The response from everyone who's come in the pharmacy has been great."

Well done Martine! It will take a fair bit getting used to the "new you" but I think we'll manage.

If anyone is still keen to donate, you can do this at Robertson Village Pharmacy in person or online at

<http://www.mycause.com.au/page/martinerolff>

By Nick Knowles

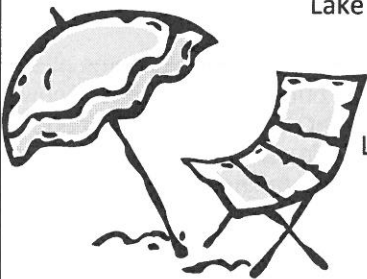
Update. We raised over \$2300 and a big thank you to all the wonderful support we had from the Robertson community.

Cheers Nick



### BiJ's on the Beach

Lake Conjola Holiday Cottage



No 16 Lake Entrance Rd  
Lake Conjola 2539 NSW

Bookings & Enquires

0429 451367



Medication Reviews,  
INR Monitoring,  
Blood Pressure & Diabetes Check,  
Webster Packs,  
Local Home Delivery

**Nick Knowles, Proprietor**

Shop 2, 101-103 Hoddle St, Robertson

Ph: 48852936

Email. [robvpharm@gmail.com](mailto:robvpharm@gmail.com)

*Caring for the Community*



**New Opening Hours**

Mon, Thurs, Fri 10-4

Sat 11-3

**Tues & Wed closed for factory work.**

(Except for School Holidays)

Gas orders can still be phoned through as usual.

02 4885 1328

**TRISH EMMERICK**

**REMEDIAL THERAPY**

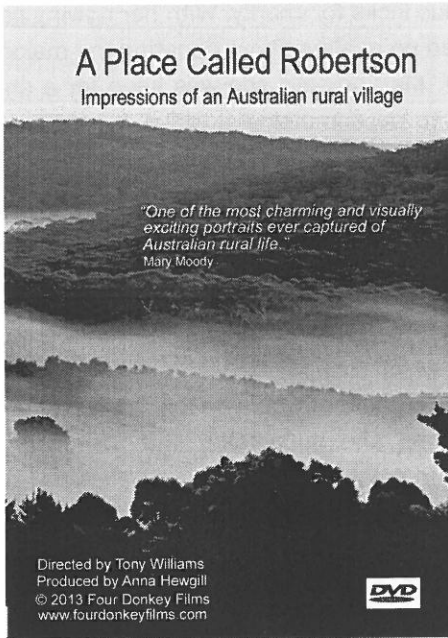
Remedial Massage, Reflexology, Reiki, Crystal  
Massage, Hot Stone Therapy, Flower Essences

Appointments in Robertson ph: 0415 673 955

Health fund rebates: Pension, student & children's rates.

## A Place Called Robertson

Now available on DVD



Buy online from

[www.fourdonkeyfilms.com](http://www.fourdonkeyfilms.com)

Or fill out this form (print clearly)

Name: \_\_\_\_\_

Address: \_\_\_\_\_  
\_\_\_\_\_  
\_\_\_\_\_

Phone: \_\_\_\_\_

No of DVDs at \$30 each

I enclose a cheque to Four Donkey Films

For \$ \_\_\_\_\_

Post to: Four Donkey Films

PO Box 3317 Robertson NSW 2577

## ROBERTSON REAL ESTATE REBOUNDS !

It's been a record year for sales of residential property in the Robertson area .... not only the number of sales settled January 2013 to date, but also the prices achieved have begun to climb back to those not seen since 2003.

Not the least of contributing factors has been the town sewage implementation at the end of June and it has been astounding to see many home owners quickly converted from the old seep away septic to the benefits of sewerage connection and the inherent capital gain for their property. Combined with the lowest home loan rates ever and the 'flow on' effect of the burgeoning Sydney housing market, the buyer enquiry rate has been refreshingly high and consistent for some months now with the end result being a happy conclusion for vendors who had their properties on the market for a long period of time.

And who are the buyers moving into this area ?.... mainly mature age retired couples who have bought substantially sized homes so they can entertain the married children and grandkids for weekends and holiday seasons. Some long term Robertson locals who are now 'empty nesters' have also taken the opportunity this year to move from existing homes on the village fringe to take up residence within walking distance of the shops and cafes or to build their long awaited dream home on new vacant land developments with Caalong Creek outlooks.

And where are the newcomers moving from ?.... well from everywhere and anywhere in Australia- some buyers from previous homes in the Blue Mountains, a smattering of ex Sydney city dwellers, and even some escaping the heat of Queensland to savour our cool nights and distinct seasons. Possibly the most often mentioned reason for moving to Robertson has been for the pleasure of gardening with our rich red soil so encouraging for trying their hand at growing their own vegetables.

A very noticeable missing element from the recent stream of buyers has been young families that were quite prolific buyers here 3-4 years ago. 2008-2009 saw a large percentage of young families moving to Robertson for a safe haven to grow the children and providing them with the space and healthy environment of our exceptional primary school, convenient playing fields and friendly community minded sports clubs. This is a prevalent trend in the real estate market along the east coast as data indicates first home buyers have been marginalised by astute long term investors seeking future capital gain in a market that appears to be firmly on the rise.

Whoever, and from wherever, the Robertson locals will welcome all new residents and the refreshing change they bring with them and renewed vigour in the village businesses - that has been the feedback consistently heard from lots of newcomers as they stroll around the village walking their faithful hounds or just taking in the fresh air on their daily exercise regime. It's "A Place Called Robertson" and a very special corner of the world!

Susan Everdell

Robertson Electrical Services  
**ROBERT HANDLEY**  
mobile: 0419 243 520

'Serving Robertson & District since 1999'  
lic No. 110210C

\* Underground power \* Smoke Alarms \* Stoves  
\* Safety switches \* Hot water \* Emergency work

## Amirun's Massage Clinic

XMAS SPECIALS & Gift Vouchers

Remedial, Cupping, Foot Spa, Reflexology  
Ear Candle Wa, Deep Lymphatic Drainage

ONLY by appointment mb: 0418 450 252

# Christmas in Robertson

**LOCAL shops offer great variety of gifts for all the family.**

**Amirun's Massage Clinic** offers gift vouchers.  
Ph 4885 1583

**Robertson Recollections** - An antique is a lasting gift. Gift vouchers available  
Ph 4885 1080

**Green Heart Gallery**-Australian craft & original art, locally made leathersgoods, great gifts for him & her. Ph 4885 2400

**Village Woodworks** - Wood, Pottery and Homewares, also refill the gas bottle for the BBQ. Ph 4885 1328

**Robertson Supermarket & Bottle Shop** for the bubbles and the beer & your grocery needs.

**Robertson Village Pharmacy** - gifts and care if you over indulge!

**Robertson Post Office** - send all those Christmas cards and gifts early

**Stairway to Hairven** - look good for the event.

**Cafe Pirouette**- Relax after shopping with a great coffee. Village Centre BYO  
Ph 4885 1788

**Pizzas in the Mist** - wood fired pizzas & pasta dinners, salads & desserts, eat in or take away. Gift Vouchers available.  
Ph. 4885 1799

**Robertson Cheese Room & Cafe**- Local & imported cheese - gourmet foods & produce  
Ph 4885 2000

**CTC** - great coffee and a great place to meet friends. Give a gift voucher for a Computer Class  
Ph 4885 2665

**Robertson Bowling Club** - Mountain Spice Bistro bookings Ph 4885 1306

**Robertson Inn** - good food & entertainment  
Ph 4885 1202

**Robertson Country Motel & Chats Café** Accommodation, music, eat in & take away. Ph 4885 1444

**Arwon Seafood** - order now  
ph 4885 1583

**Real Estate :**  
RJ..Mackey Ph 4885 1329  
Carl Hilder Ph 4885 2222  
Inside Story Ph 4885 2288

## **This Christmas please:**

- \* visit the local shops
- \* buy Australian made goods
- \* spend locally
- \* visit local attractions
- \* support local events.

For more local details go to  
[www.robertson.nsw.au](http://www.robertson.nsw.au)

We thank you and wish you  
**HAPPY CHRISTMAS**

These businesses are members of the  
**Robertson Chamber of Commerce.**

## **BOOKS, BOOKS, BOOKS**

Books from \$1. Over 4,000 books always in stock, fiction, fact; indeed.....



...books on every subject under the sun!

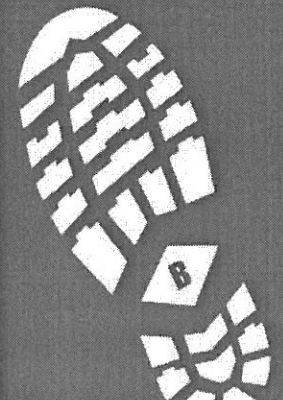
**At Robertson Recollections**

26 Hoddle St, Robertson 10.00-5.00 (Closed Wed.)

## **ben papandrea** **CONCRETOR**

ABN31 856718518  
LIC 137005C-211461C  
po box 3007 robertson 2577  
[papandrea@idx.com.au](mailto:papandrea@idx.com.au)

0422 849 111  
4885 2379



## Robertson - Not just the Green Heart of the Highlands but is it the 'Cog' as well?

Cyclists out there will be familiar with the word cog as a core part of their bike's mechanics. I'm a mountain biker but try and do a mix of everything. For a while I was drawn to the purpose built single track at Wingello and Welby but then began to explore other parts of the Highlands. Living in Moss Vale and working in Robertson, it seemed natural to me (although not to some) that a ride between the two was a definite goer. It wasn't until I began to explore my route options that I realised just how much cycling was on offer.

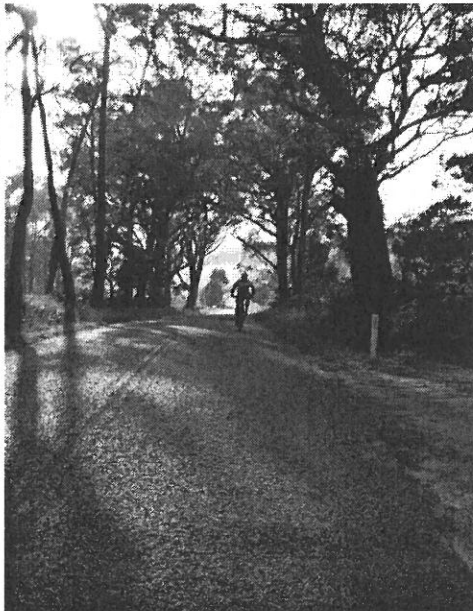
The views along Pearson's Lane are outstanding and riding the length of Wildes Meadow Road is serene. A mountain bike will take you down Bellmore Falls Road to one of best sets of lookouts in the Highlands. While a road bike will send you down Kangaloon Rd at blistering speed and punch you up the other side.

Both Robertson and Burrawang are great hubs for some really fantastic loops where you can be rewarded with a coffee and a bite to eat at the finish. From Robertson, the Tourist Rd/Kangaloon Rd loop is my pick but if you've got a mountain bike, then it's Pearsons Lane /Belmore Falls Rd.

From Burrawang you can sprint out along McGraths Rd, go west along the Illawarra Hwy then up into the village. A bigger ride can take you down Church Rd then across into Avoca and Sheepwash Rd circling through Fitzroy Falls and returning through Myra Vale Rd. For mountain bikers, Fitzroy Falls should not be forgotten where there are endless fire roads leading towards Meryla State Forest and Morton National Park. There is also the "Cannonball Run" down to Kangaroo Valley which is one the most enjoyable rides in the highlands. McGees in Bowral can do drop-off and pick-up bike hire as well so it makes it a great activity for visitors to the area.

The other important point is that there is something for everyone, regardless of your type of bike or level of experience. If you're only a beginner even just a loop around town is a great way to start. Cycling is such a great low impact activity. The most important thing is it's fun and what I like about it is that to get see things you don't normally see and it takes you to places that you don't normally go.

There has been a proposal to put some of this information up on the Robertson website. If anyone has any route suggestions or is keen to get involved, please get in touch with me, Nick Knowles, in person at Robertson Village Pharmacy or by email - robvpharm@gmail.com



## Church Services

### Anglican

#### St John's Robertson

8.00am Traditional Services  
1st Sunday- Communion  
4th Sunday- Morning Prayer

9.30am Family Service/Sunday School  
Every Sunday

#### St David's Burrawang

5.00pm - 3rd Sunday

### Roman Catholic

#### Burrawang

1st, 3rd, 5th Sundays - 8.00am  
2nd & 4th Sundays - 5.00pm

## CHRISTMAS SERVICES ST JOHN'S ROBERTSON

### Family Carols & Sausage Sizzle

Sunday 15th December

5.00pm

Church Centre

### Christmas Day

8.00am Communion (Traditional)

Old Church

9.30am Family Church

Church Centre

### Contribution Guidelines

Community Service Announcements, articles and diary submissions are free of charge. All items must be submitted by deadline dates and may be modified at the editors discretion. To avoid extensive editing please limit announcements to 25 words, and articles to a maximum 300 words. It is preferable that submissions be typed or emailed. Thank you.

### Advertising

A single insertion is \$35. (Discount of \$5 for members of Robertson Chamber of Commerce) Each insertion is limited to a maximum 85 x 55 mm. Advertisers are responsible for meeting submission deadlines. Any copy received after the deadline is unlikely to be included. All advertising is payable in advance. All advertisements to Dorothy Baker at the OPSGallery now at the Robertson Cheese Factory ph/fax 4885 2400 or PO Box 3005 Robertson 2577. Thank you for your support.

### Deadline

The next issue will be distributed in the first weeks of February. All advertising & submissions must be received by 15th January 2013. Forward correspondence to: Robertson Newsletter, 64 Hoddle St, Robertson 2577, or Email: [bjlee@dodo.com.au](mailto:bjlee@dodo.com.au). (Submissions are best supplied by email or on disk. Avoid formatting text as much as possible. Hard copy must be typed) Enquiries - 4885 1210

### Disclaimer

This newsletter is an independent publication under the auspices of The Robertson Chamber of Commerce. The ideas presented are not necessarily those of the editors nor of the Chamber. The statement and opinions expressed in this publication are made in good faith, and the editors, volunteers and contributors do not take any responsibility for those statements and opinions, any inferences that may be drawn from them, or actions or charges which may result from them. The Editor reserves the right not to print any item that is defamatory to any person or organisation, or that is anonymously sent, and to edit any contributions as required.

Editor : Barry Lee