



ROBERTSON NEWSLETTER

July 1997

Edition 1

MADE IN ROBERTSON

Right throughout Robertson there are pockets of talented people involved in all sorts of creative crafts.

On the weekend of July 5 and 6 some of these craftspeople will be showcasing their talents and opening their doors so both residents and visitors to Robertson can come along and see how different crafts are **MADE IN ROBERTSON**.

The original idea for **MADE IN ROBERTSON** is that of Neil Atkins from the Village Woodworks. Neil is keen to see local craftspeople who make and sell around 85% of their work in the local area, have access to a **MADE IN ROBERTSON** logo which would let buyers know they were buying a genuine product, made locally and of high quality.

Whilst this year the **MADE IN ROBERTSON** idea has been in its fledgling stages, it's hoped that by next year all the craftspeople in Robertson and surrounding areas will become involved for a weekend of **MADE IN ROBERTSON** and it will become an annual event.

Call into **The Village Woodworks, The Robertson Pottery** and the **Australian Puzzles and Games** shop for a fascinating insight into different crafts and their skills.

All are located in Hoddle Street, Robertson and are easy to find.

The **Robertson Pottery** and **Australian Puzzles and Games** are across the road from the County Inn and Waters General Store and the Village Woodworks is 1/2km west of town.

The **Village Woodworks** will have lots to see with woodworking skills on display, demonstrations of Folk Art and Leadlighting. The Village Woodworks combines three local businesses - **Traditional Outbuildings, Robertson Garden Retreats & Robertson Joinery** all featuring the beauty of timber.

Call in and see them on July 5 between 9.00 a.m. and 5.00 p.m.

At the **Robertson Pottery** you will be able to see the Potters at work. The Robertson Pottery has a large range of beautiful handcrafted pottery and other items. They will be open from 9.30 a.m. until 5.30 p.m. on July 5 - drop in and see them.

At **Australian Puzzles & Games** discover how to solve those puzzles which seem to take adults 1/2 an hour and a 4 year old 3 minutes! If you are one of those people who takes 1/2 an hour to unravel these puzzles then the hourly puzzle solving demonstrations will be for you!

Australian Puzzles & Games has a whole host of interesting items to discover - call into their shop on July 5.

THE ROBERTSON DIARY

JULY

There's a lot happening in Robertson on the weekend of July 5. Come along to **MADE IN ROBERTSON** on Saturday July 5 and Sunday July 6. See Newsletter for details (opposite).

Join the **National Parks and Wildlife Service** to celebrate National Aboriginal & Torres Strait Islander Day at Fitzroy Falls. Learn how to throw a boomerang or paint on bark. Watch the Bidjigal Dancers, sample some bush tucker and take a walk with an Aboriginal Ranger. It will be a day of celebration and an opportunity to learn more about Aboriginal culture.

Fitzroy Falls Visitor Centre, Morton National Park on Saturday July 5.

FREE

Between 10.00 a.m. and 3.00 p.m. - Laddie Timbery Aboriginal Arts & Crafts and Bidjigal Dancers performing dance, boomerang throwing and painting.

Between 11.00 a.m. and 2.00 p.m. - Bush Tucker talk/walk with Aboriginal Ranger Barry Moore.

SHOP 'TIL YOU DROP Bus Trip, Shopping Spree.

On Saturday July 5. The bus is picking up at Waters Newsagency at 7.00 a.m., outside Moss Vale Court House at 7.20 a.m. then New Berrima.

With lots to visit - Toys, Shoes, Clothing, Giftware & Paddy's Markets, bookings are **ESSENTIAL** and can be made by contacting Pat Willard on 85 1381.

Cost per person for the day is \$15.00 and please bring along your own Lunch.

J.C. Mauger & Son

RURAL PROPERTY SPECIALISTS SINCE 1959

**Acreage, Homes.
Advice on stock & property**

Hoddle Street, Robertson

Phone:(048) 851 313 - Fax:(048) 851 397

P.O. Box 14 Robertson 2577

DI'S TOTAL HAIR

Special - School Holidays only!!

Starting 1st July

Primary School cuts only \$6 were \$9

Monday is Pension Day - Perms \$40 were \$55

Ladies cuts \$10 were \$13

Colours - lasts 18 washes - \$20 were \$35

Connie works Monday, Friday, Saturday

Di works Tuesday, Wednesday, Thursday, Friday, Saturday

Shop 8, Robertson Village Centre

Phone 851 515



A Robertson Wallhanging is also in the pipeline to co-incide with MADE IN ROBERTSON on July 5.

Any interested Robertson resident or person(s) with Robertson connections are welcome to collect a piece of calico from Hope Waters at the Robertson Newsagency.

The idea is to draw, sew, embroider or weave (or combine all these techniques) onto the square of calico anything which is symbolic to Robertson - such as a leaf or flower from our local flora, an outline of the Old Cheese Factory, the original Sawmill and so on.

If you can't get to call into Hope and would like to make a contribution using your own square of calico, the measurements you need to know are 23.5cm x 17.5cm (or 9 1/4 inches x 7 inches).

Please leave 2cm, or 1 inch, of space on each of the sides for joining.

DRAFT FOR A NEW ROBERTSON VILLAGE PLAN

Wingecarribee Council has announced it will put on display for public consultation a draft for a new Robertson Village plan probably late in July.

Part of the consultation process will involve a Workshop session, combined with a Public Meeting, to be held on the same day.

The date for the combined Workshop and Public Meeting has yet to be determined but will likely be in August.

Keep an eye on the local newspapers as Council will be advertising when the date has been decided for the Workshop and Public Meeting. Wingecarribee Council will also be writing to all Robertson landowners advising the date as well.

Both the Robertson Village Association and the Robertson Environmental Protection Society suggest you go along on the nominated day.

WHERE TO EAT IN ROBERTSON



Bistro-style meals are served in the warmth of the Dining Room on Thursday & Saturday nights at the Robertson County Inn from 6.00pm until around 9.00pm.

The Rainforest Bistro in the County Inn is also open for Lunch each day between 12.00 midday & 2.00pm.

Pop into Chat's Restaurant for Lunch or Dinner. Located in the Robertson Country Motel, open daily for Lunch & between 5.30pm & 7.30pm, (takeaway only).

Pizza's In The Mist is great for a dine-in or take-away Pizza. Cooked in the traditional wood-fired pizza oven the range is extensive and delicious! Pizza's In The Mist are open Wednesday to Sunday between 4.00pm & 9.00pm.

Or drop in to the Highlander Cafe. The Highlander is open 10.00 am to 3.00pm weekdays & 10.00am to 6.00pm weekends.

Please support Leah Willard in her Miss Teen Quest NSW to raise money for the Epilepsy Association.

PONY CLUB

Rally days for the Pony Club are the 1ST and 3RD SUNDAY of each month at the ROBERTSON SHOWGROUND.

If you have a horse and are interested in attending you would be most welcome. For more information, please contact David Ricketts on 85 1288 or Pat Willard on 85 1381.

Don't forget the **Line Dancing** on MONDAY nights at the School of Arts between 6.30 p.m. and 9.00 p.m. for Beginners.

A light Supper is served. Adults \$6.00, Children under 10 and non-dancers \$2.00. Go along for a great night.

Remember the **Robertson Country Markets** on the SECOND SUNDAY in JULY.

The Markets are getting bigger and better each month with interesting stalls and fascinating things to look at and buy. The Markets start around 9.00 a.m. and finish around 4.30 p.m.

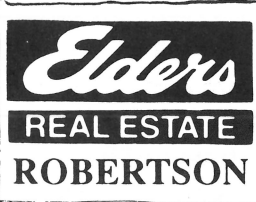
Go along for some great buys!

The **OLD TIME DANCE** is on at the School of Arts on FRIDAY JULY 18 for another great night out.

And Don't forget **Jazz On Sundays** at the County Inn.

Great Jazz Bands each Sunday from 12.30 p.m. Enjoy lunch in the Rainforest Bistro from 12 midday while listening to the music.

John Stewart, the Musicman, also plays old favourites in the Rainforest Bistro during lunchtimes on Saturday, Mondays & Tuesdays.

 <p>A Professional approach to Marketing & Management of Rural, Residential & Commercial Properties in the Southern Highlands. If you would like a free market appraisal on your property, please contact ELDERS ON (048) 85 1040</p>	<p>ELDERS REAL ESTATE 42 Hoddle Street Robertson Telephone: (048) 85 1040</p> <p>ELDERS REAL ESTATE, setting new standards</p>	<p>ROBERTSON SUPERMARKET <i>Neil & Heather Tait</i> <i>Friendly Service</i></p> <p>OPEN 8am - 8pm 7 DAYS PER WEEK Closed Christmas Day & Good Friday</p> <p>JULY SPECIALS (while stocks last)</p> <p>Heinz Tomato Soup 425g \$1.25 Milo 200g \$1.75 - Tooheys Red 375ml \$21.95</p> <p>Lots 1 & 6 HODDLE STREET ROBERTSON Phone - Fax 048 851 519</p>
---	--	---

Of course if you really are in a hurry, the famous Robertson Pie Shop is for you. The Robertson Pie Shop is open every day of the year (except Christmas Day).

And last but not least, is Ranlagh House located on the Illawarra Highway heading east serves Devonshire Teas 10.00am - 12 mid-day - 2.00 pm - 5.00pm.

COMMUNITY SERVICE CONTRIBUTIONS

For the Robertson residents who wish to have community service information printed in the Newsletter the dead line for information by phone/fax or mail for the **AUGUST ISSUE** is July 24.

Please lets hear from the Scouts, Cubs, Brownies, the Hockey Club, Soccer Club, Football Club, the Venturers, the Lions Club, the Fire Brigade, (yes the Fire Brigade!), The Community Centre, the Robertson Spinners, the Senior Citizens and Senior Groups. In fact any of our community groups who are raising funds or maybe needing volunteers and so on.

This is what our Robertson Newsletter is for - to bring News and Information to everyone in the village of Robertson. Even if your organisation does forget, let us know when an event is happening we will still ring around all the community groups each month to find out what is happening so we can pass the information on to each home in Robertson.



FROM THE EDITOR

Welcome to the very first edition of the Robertson Newsletter.

It is planned to publish the Newsletter monthly highlighting community, social and sporting events, news and information.

If you would like to make a contribution to the Newsletter the details of how to do so are at the back of the publication.

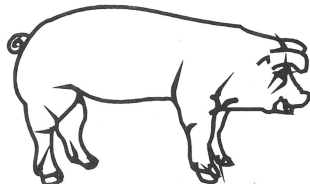
HELPERS NEEDED

Robertson Public School is in need of a few more volunteers to help with their remedial reading programme.

Past helpers have found it to be a very rewarding experience and you will be amazed at how quickly this individual attention will improve a child's reading ability.

You will be given training by the Teachers in Charge of this programme.

So if you have some time to spare and would like to become part of and help the school community, please contact Mike Reilly on 85 1284



The COUNTY INN THE DINING ROOM At the County Inn

Fine Food from Our New
Winter A La Carte Menu

Quality Wines at
Reasonable Prices

Cosy Log Fires &
Just Minutes from Home

Open Friday & Saturday Nights
6.00pm until 9.00pm

Bookings Welcome
Phone **851 202**

or Just Come in ...
We'd Love To See You

ASSOCIATION MEETINGS

The Annual General Meeting of the Robertson Village Association will be held on JULY 16. The meeting will see a change of office bearers.

7.30 p.m. at the Community Centre in Caalong Street.

MOVES & NEWS

J. C. Mauger & Son Real Estate have moved their Real Estate Office.

Jim Mauger is still located in Hoddle Street but is now next to Australian Puzzles & Games.

The phone number remains the same.

Camden Valley Antiques are now in Robertson. Located in what used to be known as Elspeth's,

Camden Valley Antiques stock and sell larger pieces of antique furniture.

Carol McCallum of Elspeth's is still there too. Carol has lots of interesting, smaller items to see and buy.

ROBERTSON SERVICE CENTRE OPEN 7 DAYS

Discount Petrol & Oils - Video Hire

Complete range of confectionery,
Drinks & Chips - Gifts & Hobbies
Bulk dog & cat food

Hoddle Street Robertson
Phone **048 851 501**

**BUILDERS
BARN**

**OPEN
7 DAYS
HARDWARE &
TIMBER
SPECIALISTS**

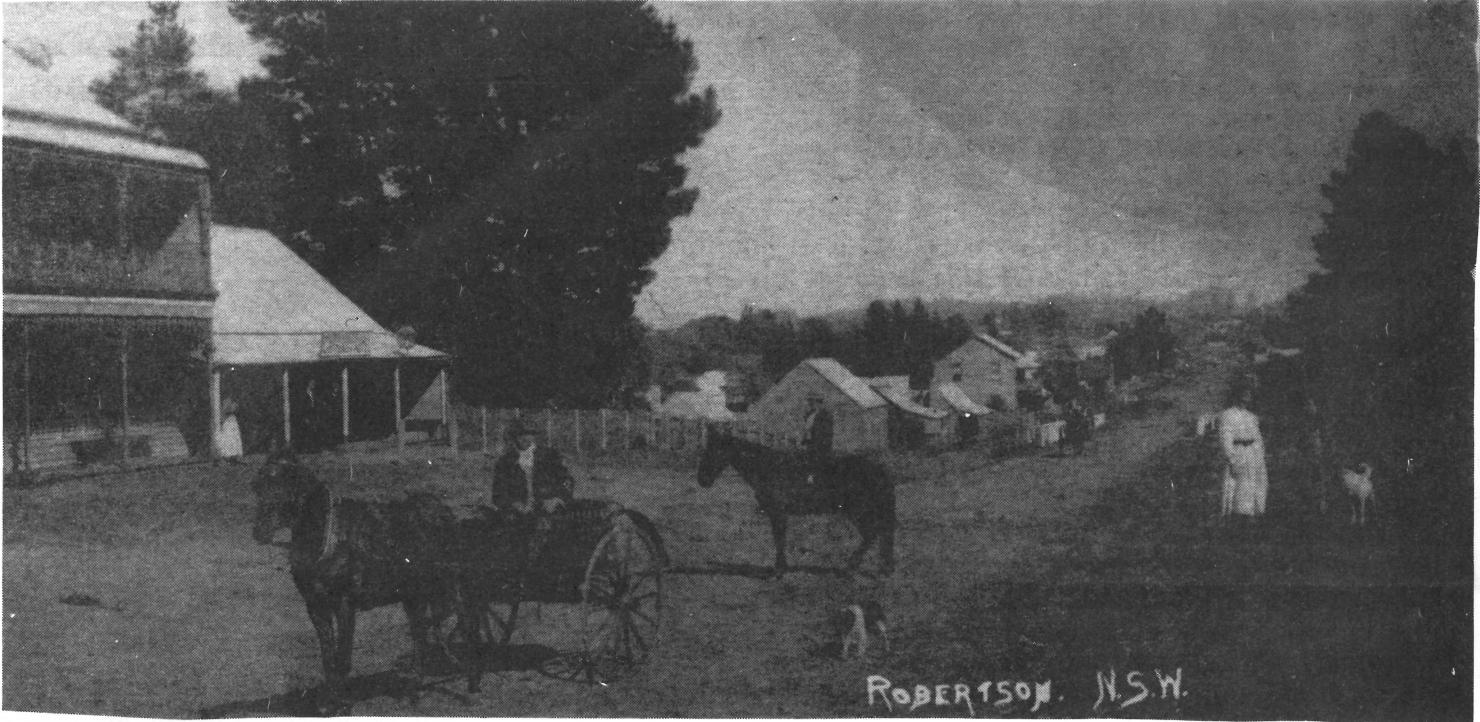
BUILDING SUPPLIES

- * Paint * Plumbing
- * Power Tools
- * Rural Supplies

85 1033

FAX: 85 1094

HODDLE STREET, ROBERTSON



Robertson is situated on the Illawarra Escarpment above Wollongong and east of Moss Vale. The area was first known as the "Yarrawa Brush". The land was covered with forests of giant Messmate trees and dense brush. The rich volcanic soil supported an almost impenetrable forest of hard and softwood timbers entwined with thick vines.

Charles Throsby and his servant Joe Wilde were most likely the first white men to explore the area, but found the brush too thick, and development of the more open west country was preferred.

The first settlers worked hard to clear the land, carving their farms and building their homes with their own hands. A close knit community developed with pride in their towns and achievement. Agriculture was the basic economy, with the area becoming well known for the quality of its products, especially the humble potato.

Today's visitors can enjoy glorious scenery and unique rainforest landscape. Close by, majestic water-falls are worthy of inspection or you can just stop awhile in the township with its early sandstone buildings, exploring the local craft and art shops and enjoying a meal in one of the fine eating houses.

NEWSLETTER ADVERTISING & COMMUNITY CONTRIBUTIONS

Apologies to those businesses to whom we have not managed to catch up with or followup with.

For advertising in the AUGUST Newsletter, please phone/fax the Editor by JULY 17 to book space. The demand for advertising space has been really terrific and each edition is filling up quickly.

The material deadline for the AUGUST issue is JULY 24. Information on advertising rates is available through the Editor on 048 85 1074

DISCLAIMER

The ideas presented in this publication are not necessarily those of the Editor.

The statements & opinions expressed in this publication are made in good faith and the Editor, volunteers and contributors do not take responsibility for those statements and opinions, any inferences that may be drawn from them, or actions or charges which may result from them.

The Editor reserves the right not to print any letter that is defamatory to any person or organisation or that is anonymously sent.